

CEP89 RABBIT PAB

Cat.#: S219352

Product Name: Anti-CEP89 Rabbit Polyclonal Antibody

Synonyms: CEP123; CCDC123

UNIPROT ID: Q96ST8 (Gene Accession - BC032307)

Background: Required for ciliogenesis. Also plays a role in mitochondrial metabolism where it may modulate complex IV activity.

Immunogen: Fusion protein of human CEP89

Applications: ELISA, IHC

Recommended Dilutions: IHC: 100-300; ELISA: 5000-10000

Host Species: Rabbit

Clonality: Rabbit Polyclonal

Isotype: Immunogen-specific rabbit IgG

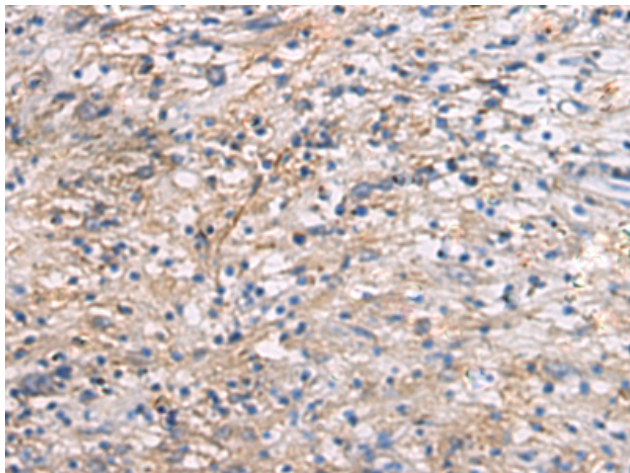
Purification: Antigen affinity purification

Species Reactivity: Human

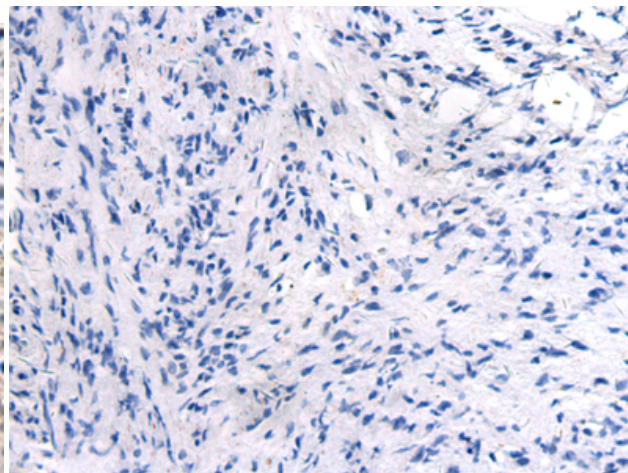
Constituents: PBS (without Mg²⁺ and Ca²⁺), pH 7.4, 150 mM NaCl, 0.05% Sodium Azide and 40% glycerol

Research Areas: Cancer

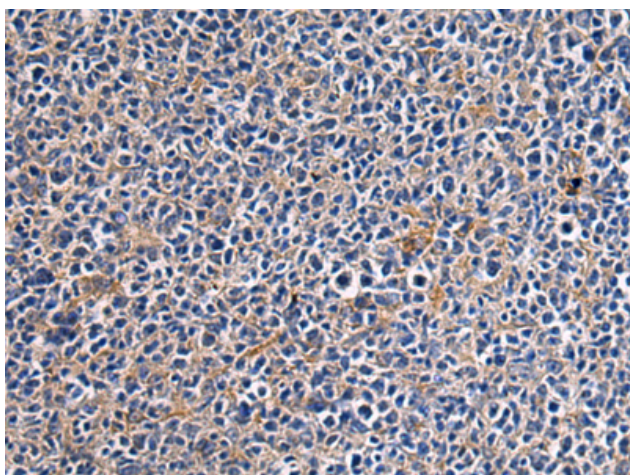
Storage & Shipping: Store at -20°C. Avoid repeated freezing and thawing



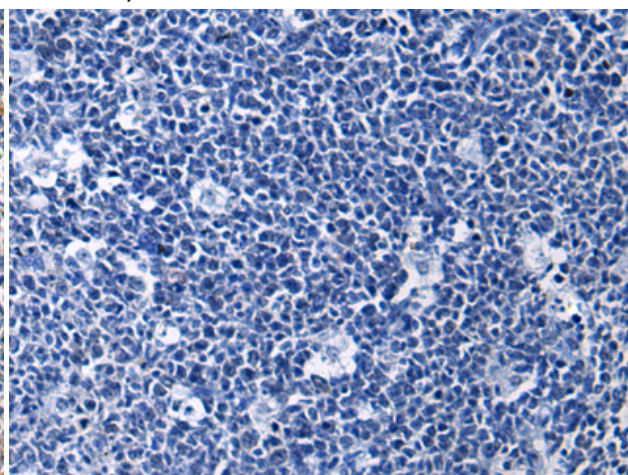
Immunohistochemistry analysis of paraffin embedded Human brain tissue using 219352(CEP89 Antibody) at a dilution of 1/95(Cytoplasm).



In comparison with the IHC on the left, the same paraffin-embedded Human brain tissue is first treated with the fusion protein and then with 219352(Anti-CEP89 Antibody) at dilution 1/95.



The image on the left is immunohistochemistry of paraffin-embedded Human tonsil tissue using 219352(Anti-CEP89 Antibody) at a dilution of 1/95.



In comparison with the IHC on the left, the same paraffin-embedded Human tonsil tissue is first treated with fusion protein and then with D226505(Anti-CEP89 Antibody) at dilution 1/95.