

CEP89 RABBIT PAB

Cat.#: S221724

Product Name: Anti-CEP89 Rabbit Polyclonal Antibody

Synonyms: CEP123; CCDC123

UNIPROT ID: Q96ST8 (Gene Accession - NP_116205)

Background: Required for ciliogenesis. Also plays a role in mitochondrial metabolism where it may modulate complex IV activity.

Immunogen: Synthetic peptide of human CEP89

Applications: ELISA, IHC

Recommended Dilutions: IHC: Oct-50; ELISA: 5000-10000

Host Species: Rabbit

Clonality: Rabbit Polyclonal

Isotype: Immunogen-specific rabbit IgG

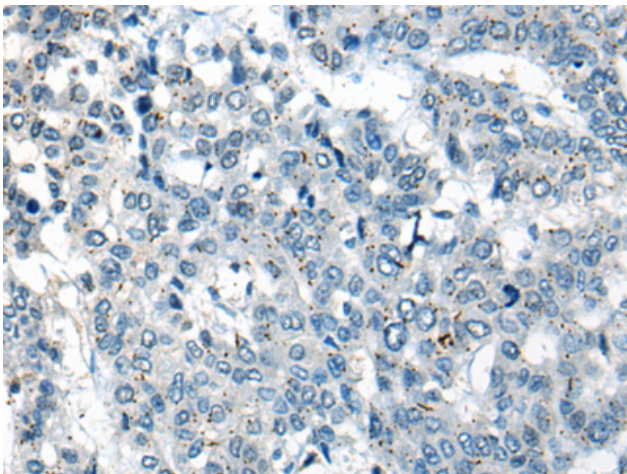
Purification: Antigen affinity purification

Species Reactivity: Human, Mouse

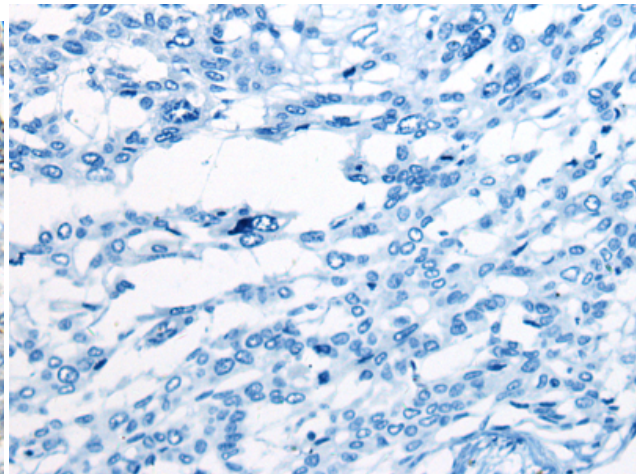
Constituents: PBS (without Mg²⁺ and Ca²⁺), pH 7.4, 150 mM NaCl, 0.05% Sodium Azide and 40% glycerol

Research Areas: Cancer

Storage & Shipping: Store at -20°C. Avoid repeated freezing and thawing



Immunohistochemistry analysis of paraffin embedded Human liver cancer tissue using 221724(CEP89 Antibody) at a dilution of 1/20(Cytoplasm).



In comparison with the IHC on the left, the same paraffin-embedded Human liver cancer tissue is first treated with the synthetic peptide and then with 221724(Anti-CEP89 Antibody) at dilution 1/20.