

CEP97 RABBIT PAB

Cat.#: S217280

Product Name: Anti-CEP97 Rabbit Polyclonal Antibody

Synonyms: LRR1Q2; 2810403B08Rik

UNIPROT ID: Q81W35 (Gene Accession - BC041085)

Background: Centrosomal protein of 97 kDa (Cep97), also known as leucine-rich repeat and IQ domain-containing protein 2 (LRR1Q2), is a protein that in humans is encoded by the CEP97 gene. Acts as a key negative regulator of ciliogenesis in collaboration with CCP110 by capping the mother centriole thereby preventing cilia formation. Required for recruitment of CCP110 to the centrosome. Interacts with CALM1, CEP76 and CCP110. Via its interaction with CCP110, may indirectly interact with HERC2 and NEURL4. Interacts with KIF24.

Immunogen: Fusion protein of human CEP97

Applications: ELISA, WB, IHC

Recommended Dilutions: IHC: 25-100;WB: 500-2000;ELISA: 2000-5000

Host Species: Rabbit

Clonality: Rabbit Polyclonal

Isotype: Immunogen-specific rabbit IgG

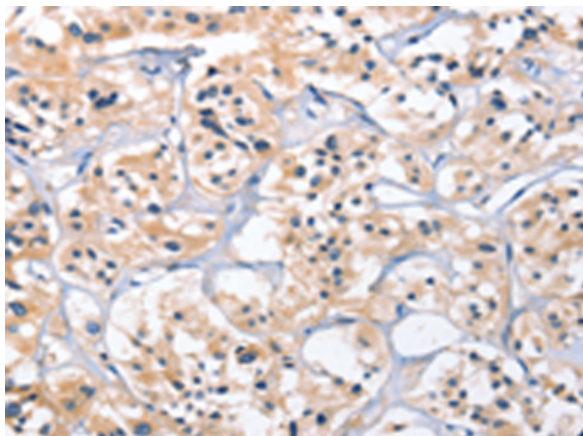
Purification: Antigen affinity purification

Species Reactivity: Human

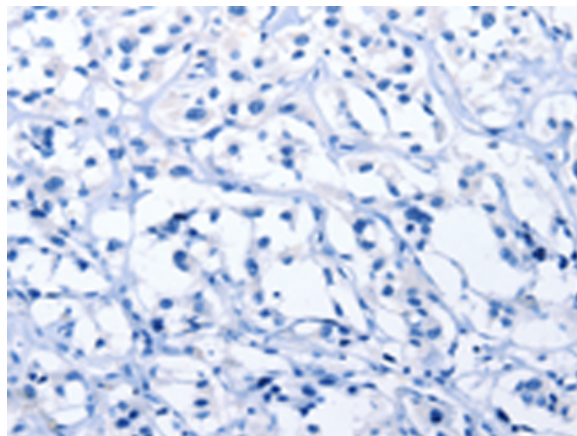
Constituents: PBS (without Mg²⁺ and Ca²⁺), pH 7.4, 150 mM NaCl, 0.05% Sodium Azide and 40% glycerol

Research Areas: Cancer

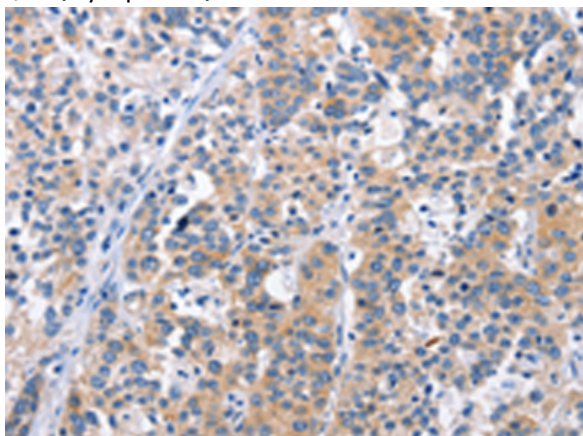
Storage & Shipping: Store at -20°C. Avoid repeated freezing and thawing



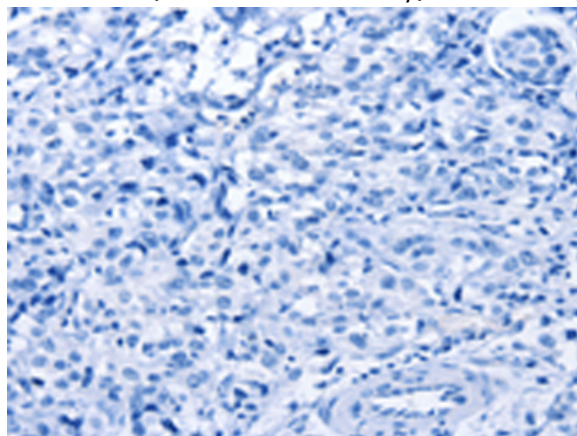
Immunohistochemistry analysis of paraffin embedded Human thyroid cancer tissue using 217280(CEP97 Antibody) at a dilution of 1/25(Cytoplasm).



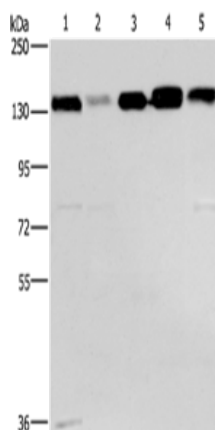
In comparison with the IHC on the left, the same paraffin-embedded Human thyroid cancer tissue is first treated with the fusion protein and then with 217280(Anti-CEP97 Antibody) at dilution 1/25.



The image on the left is immunohistochemistry of paraffin-embedded Human esophagus cancer tissue using 217280(Anti-CEP97 Antibody) at a dilution of 1/25.



In comparison with the IHC on the left, the same paraffin-embedded Human esophagus cancer tissue is first treated with fusion protein and then with D222102(Anti-CEP97 Antibody) at dilution 1/25.



Gel: 6%SDS-PAGE, Lysate: 40 μ g;
Lane 1-5: 293T cells, hela cells, PC3 cells, lovo cells, A172 cells;
Primary antibody: 217280(CEP97 Antibody) at dilution 1/500;
Secondary antibody: Goat anti rabbit IgG at 1/8000 dilution;
Exposure time: 30 seconds



Product Description

Pioneering GTPase and Oncogene Product Development since 2010
