

CERS5 RABBIT PAB

Cat.#: S220670

Product Name: Anti-CERS5 Rabbit Polyclonal Antibody

Synonyms: Trh4; LASS5

UNIPROT ID: Q8N5B7 (Gene Accession - NP_671723)

Background: This gene encodes a protein that belongs to the TLC (TRAM, LAG1 and CLN8 homology domains) family of proteins. The encoded protein functions in the synthesis of ceramide, a lipid molecule that is involved in a several cellular signaling pathways. Alternate splicing results in multiple transcript variants.

Immunogen: Synthetic peptide of human CERS5

Applications: ELISA, WB, IHC

Recommended Dilutions: IHC: 50-200;WB: 200-1000;ELISA: 1000-2000

Host Species: Rabbit

Clonality: Rabbit Polyclonal

Isotype: Immunogen-specific rabbit IgG

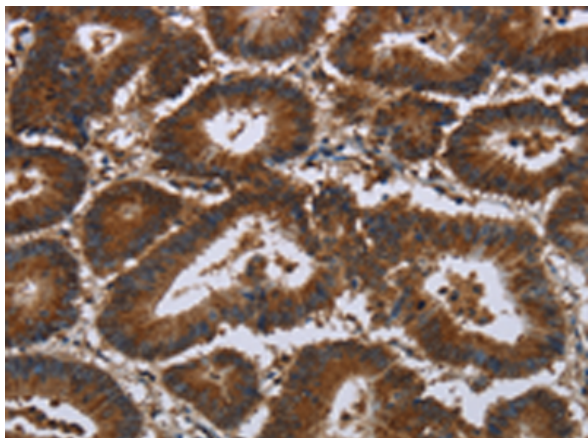
Purification: Antigen affinity purification

Species Reactivity: Human, Mouse

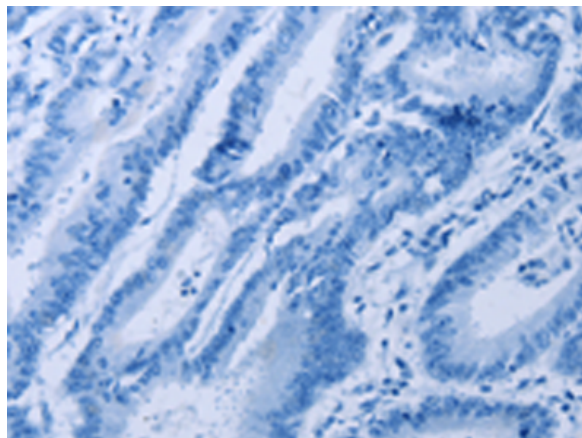
Constituents: PBS (without Mg²⁺ and Ca²⁺), pH 7.4, 150 mM NaCl, 0.05% Sodium Azide and 40% glycerol

Research Areas: Metabolism, Cancer

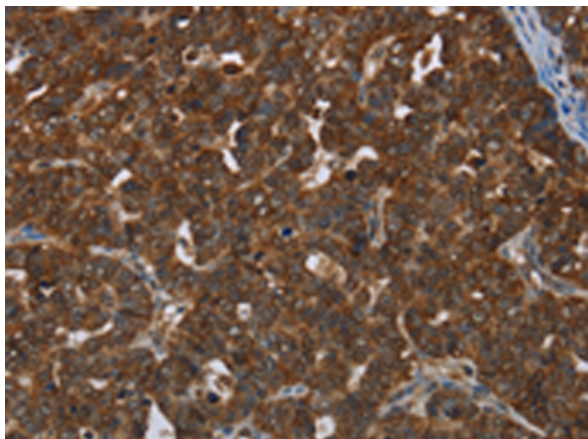
Storage & Shipping: Store at -20°C. Avoid repeated freezing and thawing



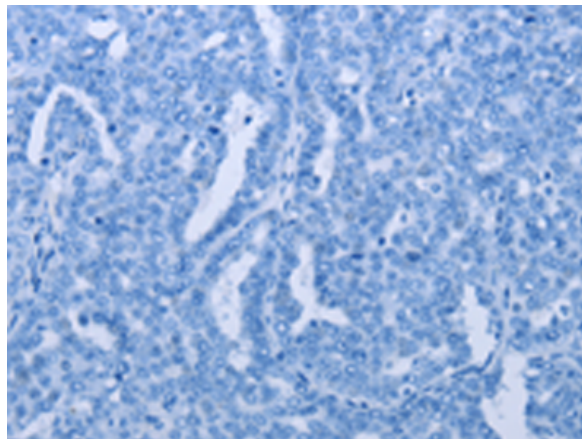
Immunohistochemistry analysis of paraffin embedded Human colon cancer tissue using 220670(CERS5 Antibody) at a dilution of 1/35(Cytoplasm or Nucleus).



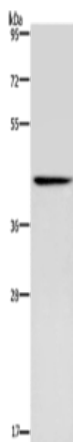
In comparison with the IHC on the left, the same paraffin-embedded Human colon cancer tissue is first treated with the synthetic peptide and then with 220670(Anti-CERS5 Antibody) at dilution 1/35.



The image on the left is immunohistochemistry of paraffin-embedded Human cervical cancer tissue using 220670(Anti-CERS5 Antibody) at a dilution of 1/35.



In comparison with the IHC on the left, the same paraffin-embedded Human cervical cancer tissue is first treated with synthetic peptide and then with D261850(Anti-CERS5 Antibody) at dilution 1/35.



Gel: 8%SDS-PAGE, Lysate: 40 µg;
Lane: Human fetal brain tissue;
Primary antibody: 220670(CERS5 Antibody) at dilution 1/350;
Secondary antibody: Goat anti rabbit IgG at 1/8000 dilution;
Exposure time: 5 minutes



Product Description

Pioneering GTPase and Oncogene Product Development since 2010
