

## CETN2 RABBIT PAB

**Cat.#:** S218470

**Product Name:** Anti-CETN2 Rabbit Polyclonal Antibody

**Synonyms:** CALT; CEN2

**UNIPROT ID:** P41208 (Gene Accession - BC005334 )

**Background:** Caltractin belongs to a family of calcium-binding proteins and is a structural component of the centrosome. The high level of conservation from algae to humans and its association with the centrosome suggested that caltractin plays a fundamental role in the structure and function of the microtubule-organizing center, possibly required for the proper duplication and segregation of the centrosome.

**Immunogen:** Fusion protein of human CETN2

**Applications:** ELISA, IHC

**Recommended Dilutions:** IHC: 200-400; ELISA: 5000-10000

**Host Species:** Rabbit

**Clonality:** Rabbit Polyclonal

**Isotype:** Immunogen-specific rabbit IgG

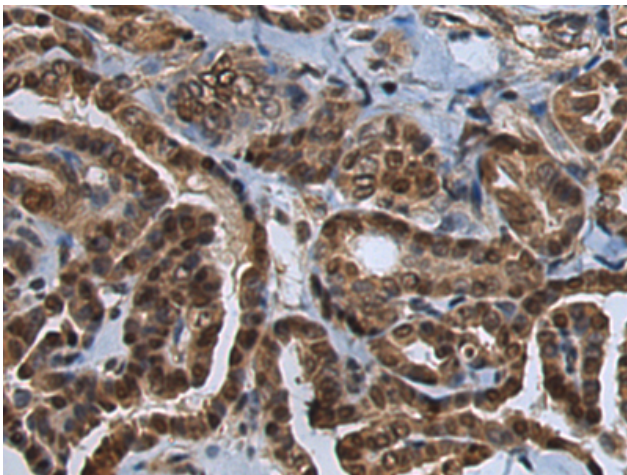
**Purification:** Antigen affinity purification

**Species Reactivity:** Human, Mouse

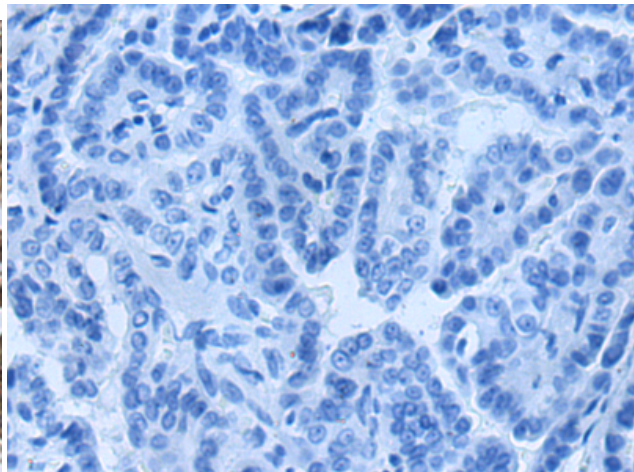
**Constituents:** PBS (without Mg<sup>2+</sup> and Ca<sup>2+</sup>), pH 7.4, 150 mM NaCl, 0.05% Sodium Azide and 40% glycerol

**Research Areas:** Signal Transduction, Epigenetics and Nuclear Signaling, Cancer

**Storage & Shipping:** Store at -20°C. Avoid repeated freezing and thawing



Immunohistochemistry analysis of paraffin embedded Human thyroid cancer tissue using 218470(CETN2 Antibody) at a dilution of 1/200(Cytoplasm and Nucleus).



In comparison with the IHC on the left, the same paraffin-embedded Human thyroid cancer tissue is first treated with the fusion protein and then with 218470(Anti-CETN2 Antibody) at dilution 1/200.