

CFAP298 RABBIT PAB

Cat.#: S218409

Product Name: Anti-CFAP298 Rabbit Polyclonal Antibody

Synonyms: Kur; FBB18; CILD26; C21orf48; C21orf59

UNIPROT ID: P57076 (Gene Accession - BC000709)

Background: This gene encodes a protein that plays a critical role in dynein arm assembly and motile cilia function. Mutations in this gene result in primary ciliary dyskinesia. Naturally occurring readthrough transcription occurs from this locus to the downstream t-complex 10 like (TCPI0L) gene. [provided by RefSeq, Apr 2017]

Immunogen: Fusion protein of human CFAP298

Applications: ELISA, WB, IHC

Recommended Dilutions: IHC: 25-100;WB: 200-1000;ELISA: 5000-10000

Host Species: Rabbit

Clonality: Rabbit Polyclonal

Isotype: Immunogen-specific rabbit IgG

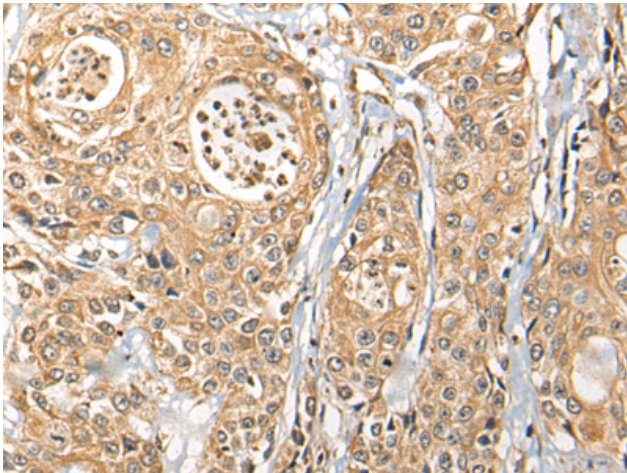
Purification: Antigen affinity purification

Species Reactivity: Human, Mouse, Rat

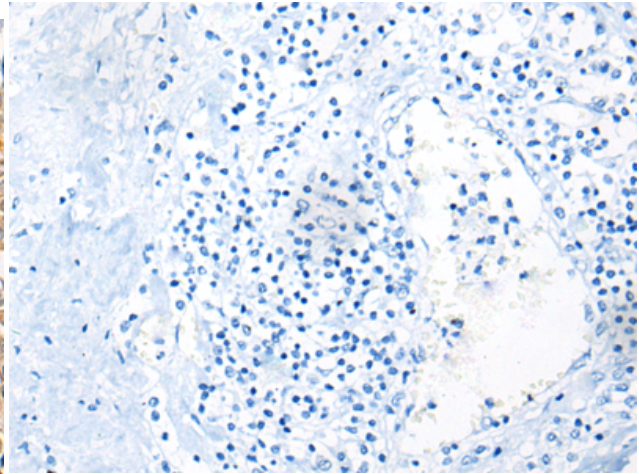
Constituents: PBS (without Mg²⁺ and Ca²⁺), pH 7.4, 150 mM NaCl, 0.05% Sodium Azide and 40% glycerol

Research Areas: Signal Transduction

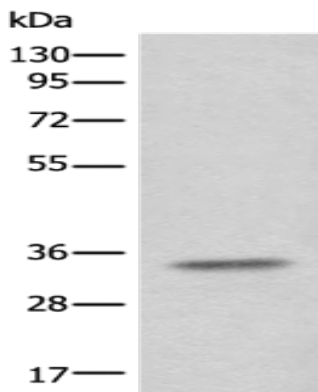
Storage & Shipping: Store at -20°C. Avoid repeated freezing and thawing



Immunohistochemistry analysis of paraffin embedded Human prostate cancer tissue using 218409(CFAP298 Antibody) at a dilution of 1/30(Cytoplasm).



In comparison with the IHC on the left, the same paraffin-embedded Human prostate cancer tissue is first treated with the fusion protein and then with 218409(Anti-CFAP298 Antibody) at dilution 1/30.



Gel: 8%SDS-PAGE, Lysate: 40 μ g;
Lane: Human testis tissue lysate;
Primary antibody: 218409(CFAP298 Antibody) at dilution 1/250;
Secondary antibody: Goat anti rabbit IgG at 1/8000 dilution;
Exposure time: 1 second