

CFHR2 RABBIT PAB

Cat.#: S218478

Product Name: Anti-CFHR2 Rabbit Polyclonal Antibody

Synonyms: FHR2; HFL3; CFHL2

UNIPROT ID: P36980 (Gene Accession - BC022283)

Background: This gene belongs to a family of complement factor H-related genes (CFHR), which are clustered together with complement factor H gene on chromosome 1, and are involved in regulation of complement. Mutations in CFHR genes have been associated with dense deposit disease and atypical haemolytic-uraemic syndrome. Alternatively spliced transcript variants have been found for this gene. [provided by RefSeq, Aug 2015]

Immunogen: Fusion protein of human CFHR2

Applications: ELISA, IHC

Recommended Dilutions: IHC: 100-300; ELISA: 5000-10000

Host Species: Rabbit

Clonality: Rabbit Polyclonal

Isotype: Immunogen-specific rabbit IgG

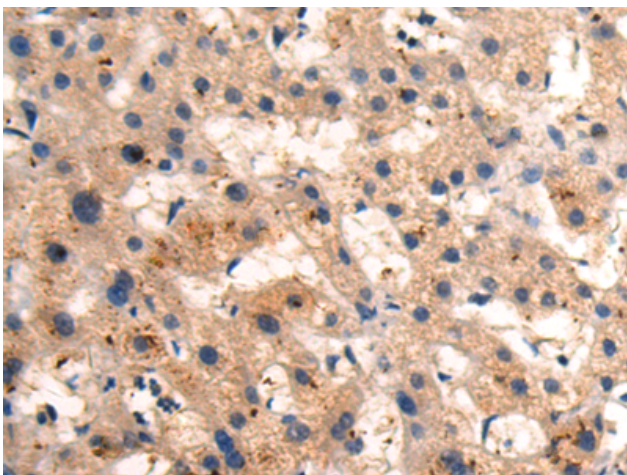
Purification: Antigen affinity purification

Species Reactivity: Human

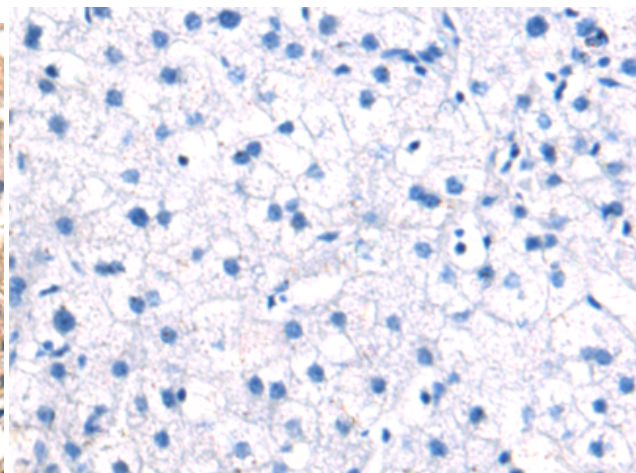
Constituents: PBS (without Mg²⁺ and Ca²⁺), pH 7.4, 150 mM NaCl, 0.05% Sodium Azide and 40% glycerol

Research Areas: Metabolism, Immunology

Storage & Shipping: Store at -20°C. Avoid repeated freezing and thawing



Immunohistochemistry analysis of paraffin embedded Human liver cancer tissue using 218478 (CFHR2 Antibody) at a dilution of 1/80 (Secreted).



In comparison with the IHC on the left, the same paraffin-embedded Human liver cancer tissue is first treated with the fusion protein and then with 218478 (Anti-CFHR2 Antibody) at dilution 1/80.