

## CFTR RABBIT PAB

**Cat.#:** S219694

**Product Name:** Anti-CFTR Rabbit Polyclonal Antibody

**Synonyms:** CF, MRP7, ABC35, ABCC7, CFTR/MRP, TNR-CFTR, dJ760C5.1

**UNIPROT ID:** P13569 (Gene Accession - NP\_000483 )

**Background:** This gene encodes a member of the ATP-binding cassette (ABC) transporter superfamily. ABC proteins transport various molecules across extra- and intra-cellular membranes. ABC genes are divided into seven distinct subfamilies (ABCC1, MDR/TAP, MRP, ALD, OABP, GCN20, White). This protein is a member of the MRP subfamily that is involved in multi-drug resistance. The encoded protein functions as a chloride channel and controls the regulation of other transport pathways. Mutations in this gene are associated with the autosomal recessive disorders cystic fibrosis and congenital bilateral aplasia of the vas deferens. Alternatively spliced transcript variants have been described, many of which result from mutations in this gene.

**Immunogen:** Synthetic peptide of human CFTR

**Applications:** ELISA, IHC

**Recommended Dilutions:** IHC: Oct-50; ELISA: 500-5000

**Host Species:** Rabbit

**Clonality:** Rabbit Polyclonal

**Isotype:** Immunogen-specific rabbit IgG

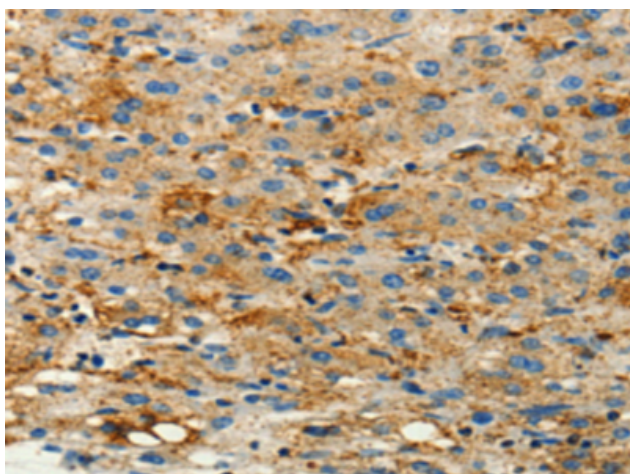
**Purification:** Antigen affinity purification

**Species Reactivity:** Human

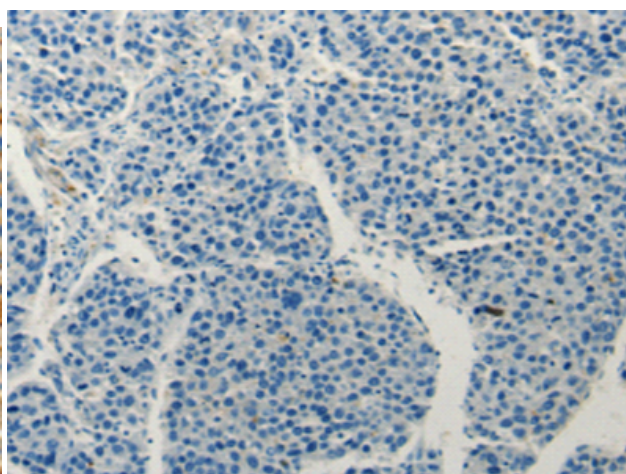
**Constituents:** PBS (without Mg<sup>2+</sup> and Ca<sup>2+</sup>), pH 7.4, 150 mM NaCl, 0.05% Sodium Azide and 40% glycerol

**Research Areas:** Metabolism, Cell Biology

**Storage & Shipping:** Store at -20°C. Avoid repeated freezing and thawing



Immunohistochemistry analysis of paraffin embedded Human liver cancer tissue using 219694(CFTR Antibody) at a dilution of 1/10(Cytoplasm, Cell membrane).



In comparison with the IHC on the left, the same paraffin-embedded Human liver cancer tissue is first treated with the synthetic peptide and then with 219694(Anti-CFTR Antibody) at dilution 1/10.



# Product Description

Pioneering GTPase and Oncogene Product Development since 2010

---