

## CGA RABBIT PAB

**Cat.#:** S217281

**Product Name:** Anti-CGA Rabbit Polyclonal Antibody

**Synonyms:** HCG; LHA; FSHA; GPH $\alpha$ ; TSHA; GPHA1; CG-ALPHA

**UNIPROT ID:** P01215 (Gene Accession - BC020782 )

**Background:** The four human glycoprotein hormones chorionic gonadotropin (CG), luteinizing hormone (LH), follicle stimulating hormone (FSH), and thyroid stimulating hormone (TSH) are dimers consisting of alpha and beta subunits that are associated noncovalently. The alpha subunits of these hormones are identical, however, their beta chains are unique and confer biological specificity. The protein encoded by this gene is the alpha subunit and belongs to the glycoprotein hormones alpha chain family. Two transcript variants encoding different isoforms have been found for this gene.

**Immunogen:** Fusion protein of human CGA

**Applications:** ELISA, WB, IHC

**Recommended Dilutions:** IHC: 50-200;WB: 500-2000;ELISA: 5000-10000

**Host Species:** Rabbit

**Clonality:** Rabbit Polyclonal

**Isotype:** Immunogen-specific rabbit IgG

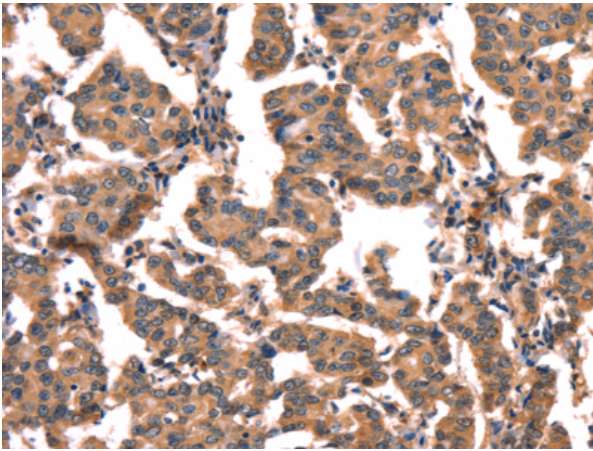
**Purification:** Antigen affinity purification

**Species Reactivity:** Human

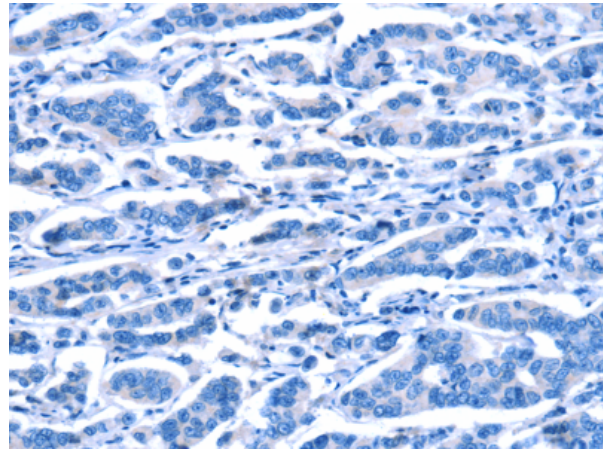
**Constituents:** PBS (without Mg<sup>2+</sup> and Ca<sup>2+</sup>), pH 7.4, 150 mM NaCl, 0.05% Sodium Azide and 40% glycerol

**Research Areas:** Signal Transduction, Cancer, Metabolism, Developmental Biology

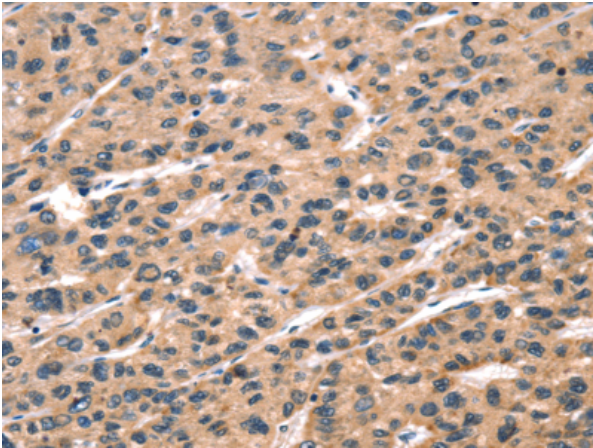
**Storage & Shipping:** Store at -20°C. Avoid repeated freezing and thawing



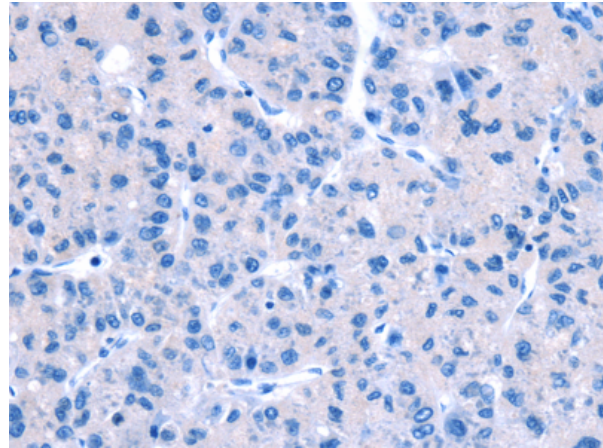
Immunohistochemistry analysis of paraffin embedded Human breast cancer tissue using 217281(CGA Antibody) at a dilution of 1/65(Cytoplasm).



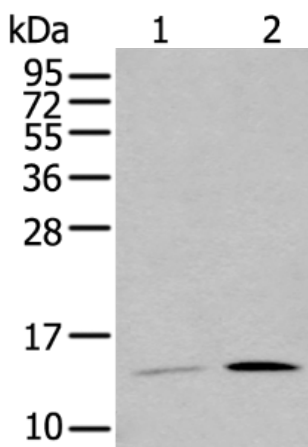
In comparison with the IHC on the left, the same paraffin-embedded Human breast cancer tissue is first treated with the fusion protein and then with 217281(Anti-CGA Antibody) at dilution 1/65.



The image on the left is immunohistochemistry of paraffin-embedded Human liver cancer tissue using 217281(Anti-CGA Antibody) at a dilution of 1/65.



In comparison with the IHC on the left, the same paraffin-embedded Human liver cancer tissue is first treated with fusion protein and then with D222104(Anti-CGA Antibody) at dilution 1/65.



Gel: 12%SDS-PAGE, Lysate: 40 µg;  
Lane 1-2: HepG2 and 231 cell lysates;  
Primary antibody: 217281(CGA Antibody) at dilution 1/650;  
Secondary antibody: Goat anti rabbit IgG at 1/8000 dilution;  
Exposure time: 1 minute



# Product Description

Pioneering GTPase and Oncogene Product Development since 2010

---