

CGBP RABBIT MAB

Cat.#: N262030

Product Name: Anti-CGBP Rabbit Monoclonal Antibody

Synonyms: CFPI; CGBP; SPPI; PCCX1; PHF18; hCGBP; ZCGPC1; HsT2645; 2410002I16Rik; 5830420C16Rik

UNIPROT ID: Q9P0U4

Background: Transcriptional activator that exhibits a unique DNA binding specificity for CpG unmethylated motifs with a preference for CpGG.

Immunogen: A synthetic peptide of CGBP

Applications: WB,IHC-F,IHC-P,ICC/IF,IP

Recommended Dilutions: WB: 1/500-1/1000 IHC: 1/50-1/100 IF: 1/50-1/200 IP: 1/20

Host Species: Rabbit

Clonality: Rabbit Monoclonal

Clone ID: R06-4K1

MW: Calculated MW: 76 kDa; Observed MW: 76 kDa

Isotype: IgG

Purification: Affinity Purified

Species Reactivity: Human,Mouse,Rat

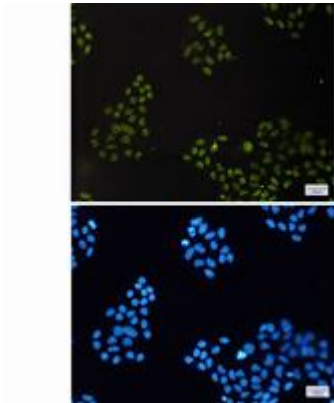
Conjugation: Unconjugated

Modification: Unmodified

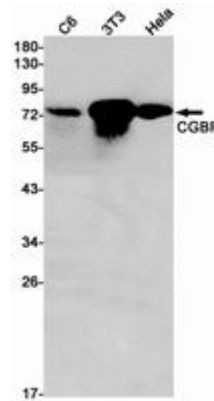
Constituents: PBS (without Mg²⁺ and Ca²⁺), pH 7.3 containing 50% glycerol, 0.5% BSA and 0.02% sodium azide

Research Areas: Epigenetics and Nuclear Signaling

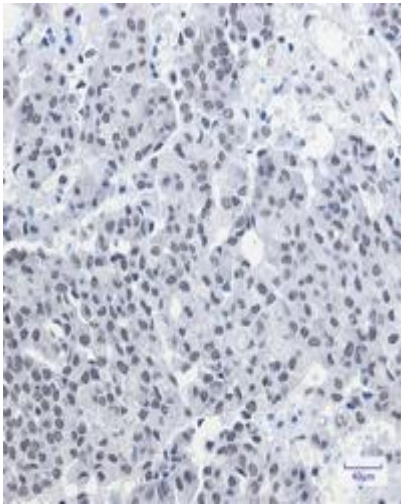
Storage & Shipping: Store at -20°C. Avoid repeated freezing and thawing



Immunocytochemistry analysis of CGBP (green) in HeLa using CGBP antibody, and DAPI (blue)



Western blot analysis of CGBP in C6, 3T3, HeLa lysates using CGBP antibody.



Immunohistochemistry analysis of paraffin-embedded Human breast cancer using CGBP antibody. High-pressure and temperature Sodium Citrate pH 6.0 was used for antigen retrieval.