

CGREF1 RABBIT PAB

Cat.#: S218480

Product Name: Anti-CGREF1 Rabbit Polyclonal Antibody

Synonyms: CGR11

UNIPROT ID: Q99674 (Gene Accession - BC034764)

Background: CGREF1 (cell growth regulator with EF-hand domain 1), also known as CGR11, is a 301 amino acid secreted protein that contains two highly conserved calcium binding EF-hand domains, which are required for mediating cell-cell adhesion. Induced by p53, CGREF1 is able to inhibit cell growth in various cell lines. CGREF1 is encoded by a gene located on human chromosome 2, which houses over 1,400 genes and comprises nearly 8% of the human genome. Harlequin ichthyosis, a rare and morbid skin deformity, is associated with mutations in the ABCA12 gene, while the lipid metabolic disorder sitosterolemia is associated with defects in the ABCG5 and ABCG8 genes. Additionally, an extremely rare recessive genetic disorder, Alström syndrome, is caused by mutations in the ALMS1 gene, which maps to chromosome 2.

Immunogen: Fusion protein of human CGREF1

Applications: ELISA, IHC

Recommended Dilutions: IHC: 25-100; ELISA: 5000-10000

Host Species: Rabbit

Clonality: Rabbit Polyclonal

Isotype: Immunogen-specific rabbit IgG

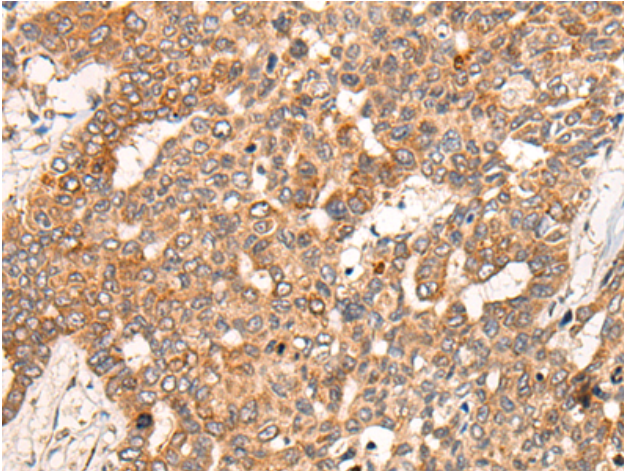
Purification: Antigen affinity purification

Species Reactivity: Human

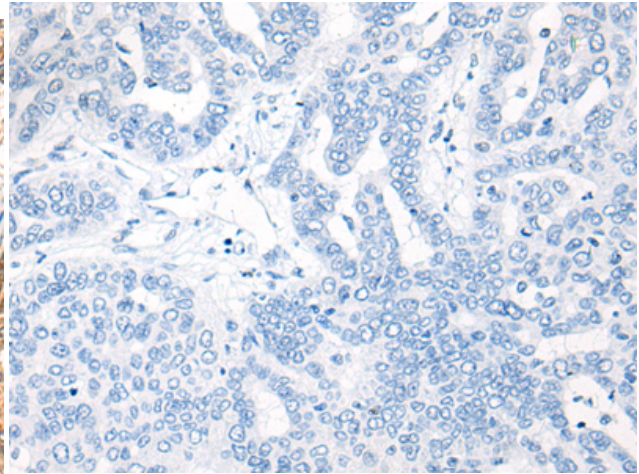
Constituents: PBS (without Mg²⁺ and Ca²⁺), pH 7.4, 150 mM NaCl, 0.05% Sodium Azide and 40% glycerol

Research Areas: Cancer

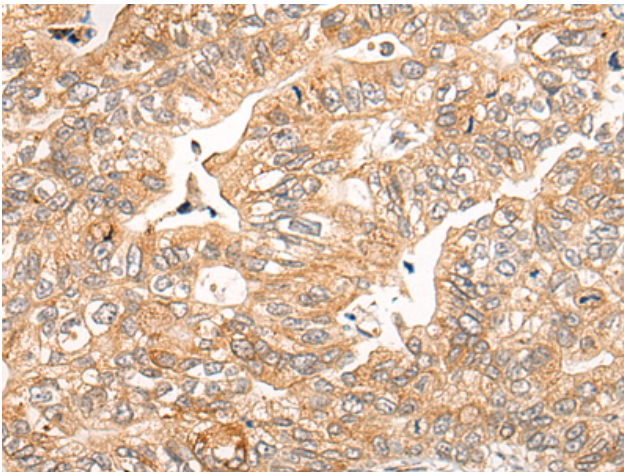
Storage & Shipping: Store at -20°C. Avoid repeated freezing and thawing



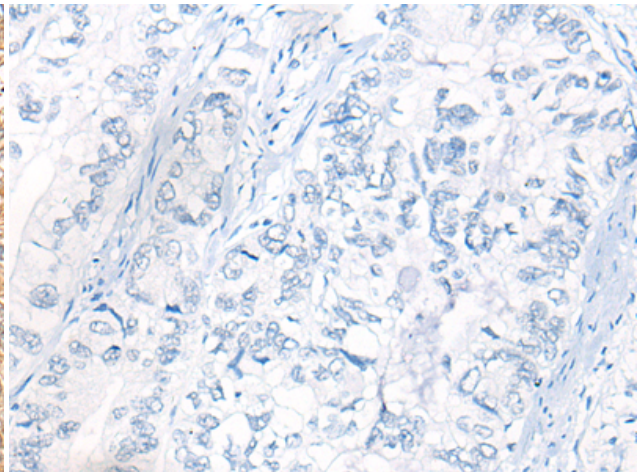
Immunohistochemistry analysis of paraffin embedded Human liver cancer tissue using 218480(CGREF1 Antibody) at a dilution of 1/20(Cytoplasm and Cell membrane).



In comparison with the IHC on the left, the same paraffin-embedded Human liver cancer tissue is first treated with the fusion protein and then with 218480(Anti-CGREF1 Antibody) at dilution 1/20.



The image on the left is immunohistochemistry of paraffin-embedded Human gastric cancer tissue using 218480(Anti-CGREF1 Antibody) at a dilution of 1/20.



In comparison with the IHC on the left, the same paraffin-embedded Human gastric cancer tissue is first treated with fusion protein and then with D224529(Anti-CGREF1 Antibody) at dilution 1/20.