

CHAC2 RABBIT PAB

Cat.#: S218481

Product Name: Anti-CHAC2 Rabbit Polyclonal Antibody

Synonyms:

UNIPROT ID: Q8WUX2 (Gene Accession - BC019239)

Background: The protein encoded by this gene is a gamma-glutamyl cyclotransferase that catalyzes the conversion of glutathione to 5-oxoproline and cysteinylglycine. It is thought that this gene is upregulated in response to endoplasmic reticulum stress and that the glutathione depletion enhances apoptosis.

Immunogen: Full length fusion protein

Applications: ELISA, IHC

Recommended Dilutions: IHC: 25-100; ELISA: 5000-10000

Host Species: Rabbit

Clonality: Rabbit Polyclonal

Isotype: Immunogen-specific rabbit IgG

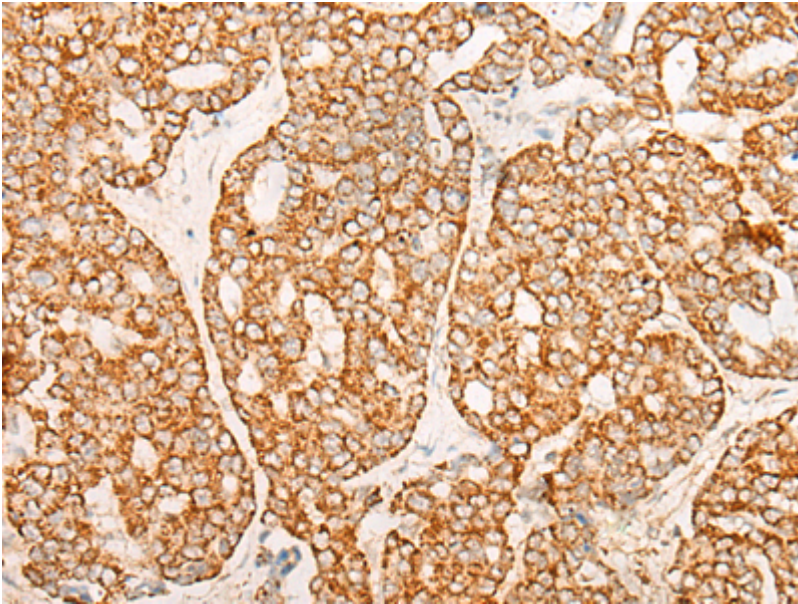
Purification: Antigen affinity purification

Species Reactivity: Human, Mouse, Rat

Constituents: PBS (without Mg²⁺ and Ca²⁺), pH 7.4, 150 mM NaCl, 0.05% Sodium Azide and 40% glycerol

Research Areas: Cell Biology

Storage & Shipping: Store at -20°C. Avoid repeated freezing and thawing



Immunohistochemistry analysis of paraffin-embedded Human liver cancer tissue using 218481(CHAC2 Antibody) at a dilution of 1/20(Cytoplasm and Cell membrane).