

## CHDH RABBIT PAB

**Cat.#:** S217283

**Product Name:** Anti-CHDH Rabbit Polyclonal Antibody

**Synonyms:**

**UNIPROT ID:** Q8NE62 (Gene Accession - BC034502 )

**Background:** The protein encoded by this gene is a choline dehydrogenase that localizes to the mitochondrion. Variations in this gene can affect susceptibility to choline deficiency. A few transcript variants have been found for this gene, but the full-length nature of only one has been characterized to date.

**Immunogen:** Fusion protein of human CHDH

**Applications:** ELISA, WB, IHC

**Recommended Dilutions:** IHC: 100-300;WB: 500-2000;ELISA: 5000-10000

**Host Species:** Rabbit

**Clonality:** Rabbit Polyclonal

**Isotype:** Immunogen-specific rabbit IgG

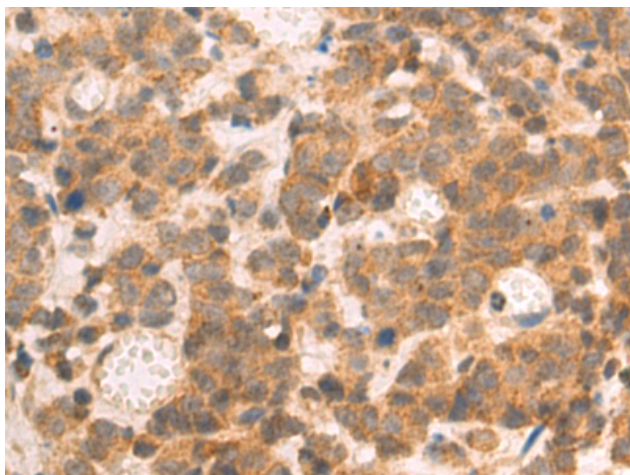
**Purification:** Antigen affinity purification

**Species Reactivity:** Human, Mouse, Rat

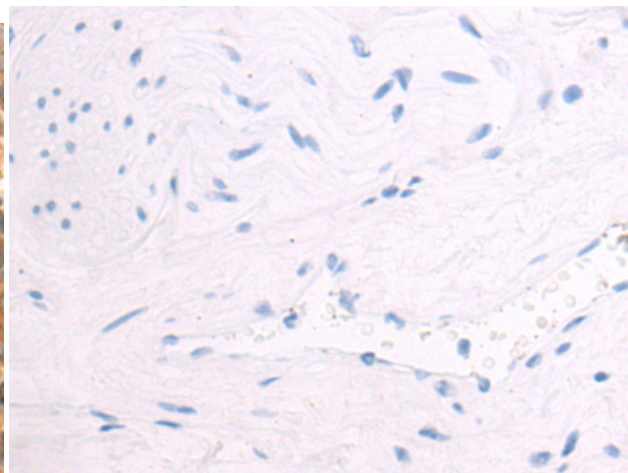
**Constituents:** PBS (without Mg<sup>2+</sup> and Ca<sup>2+</sup>), pH 7.4, 150 mM NaCl, 0.05% Sodium Azide and 40% glycerol

**Research Areas:** Metabolism, Cancer, Cell Biology

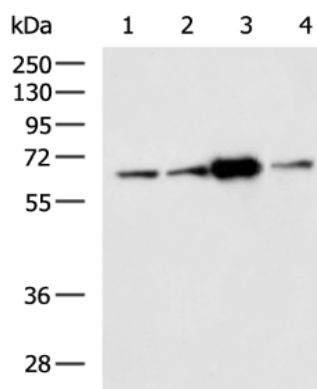
**Storage & Shipping:** Store at -20°C. Avoid repeated freezing and thawing



Immunohistochemistry analysis of paraffin embedded Human prostate cancer tissue using 217283(CHDH Antibody) at a dilution of 1/100(Cytoplasm).



In comparison with the IHC on the left, the same paraffin-embedded Human prostate cancer tissue is first treated with the fusion protein and then with 217283(Anti-CHDH Antibody) at dilution 1/100.



Gel: 8%SDS-PAGE, Lysate: 40 µg;  
 Lane 1-4: HepG2 cell, Mouse fetal liver tissue,  
 Rat liver tissue, 231 cell lysates;  
 Primary antibody: 217283(CHDH Antibody) at  
 dilution 1/700;  
 Secondary antibody: HRP-conjugated Goat  
 anti rabbit IgG at 1/5000 dilution;  
 Exposure time: 3 seconds