

## CHERP RABBIT PAB

**Cat.#:** S218485

**Product Name:** Anti-CHERP Rabbit Polyclonal Antibody

**Synonyms:** SRA1; DAN16; SCAF6

**UNIPROT ID:** Q8IWX8 (Gene Accession - BC021294 )

**Background:** The regulation of the intracellular concentration of calcium is important for proper maintenance of voltage-gated ion channels which control muscle and nerve function. Calcium homeostasis is regulated by a variety of proteins. CHERP (calcium homeostasis endoplasmic reticulum protein), also known as SRA1, DAN16 or SCAF6, is a 916 amino acid protein that localizes to the cytoplasm and the endoplasmic reticulum (ER). Expressed in pancreas, brain, lung, placenta, liver, kidney, heart and skeletal muscle, CHERP is involved in maintaining calcium homeostasis and plays a role in cell growth and proliferation. CHERP contains one G-patch domain, one RPR domain and one SURP motif and is expressed as two isoforms due to alternative splicing events.

**Immunogen:** Fusion protein of human CHERP

**Applications:** ELISA, IHC

**Recommended Dilutions:** IHC: 20-100; ELISA: 5000-10000

**Host Species:** Rabbit

**Clonality:** Rabbit Polyclonal

**Isotype:** Immunogen-specific rabbit IgG

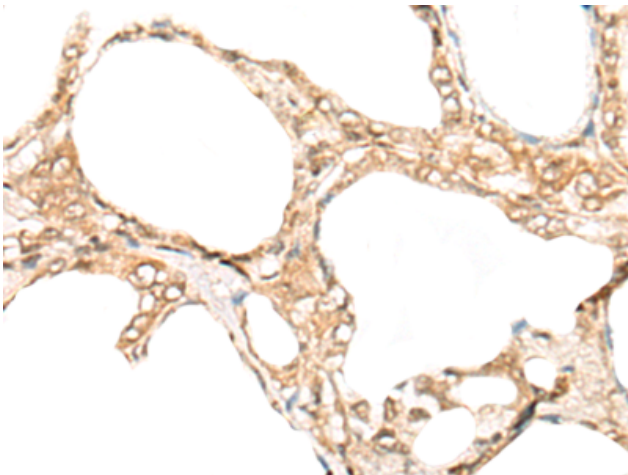
**Purification:** Antigen affinity purification

**Species Reactivity:** Human

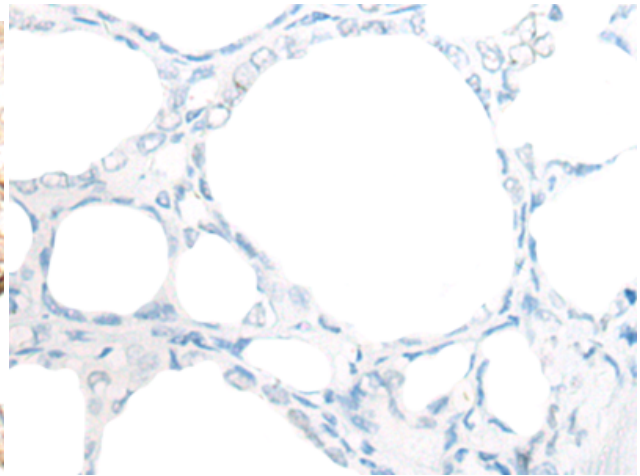
**Constituents:** PBS (without Mg<sup>2+</sup> and Ca<sup>2+</sup>), pH 7.4, 150 mM NaCl, 0.05% Sodium Azide and 40% glycerol

**Research Areas:** Signal Transduction

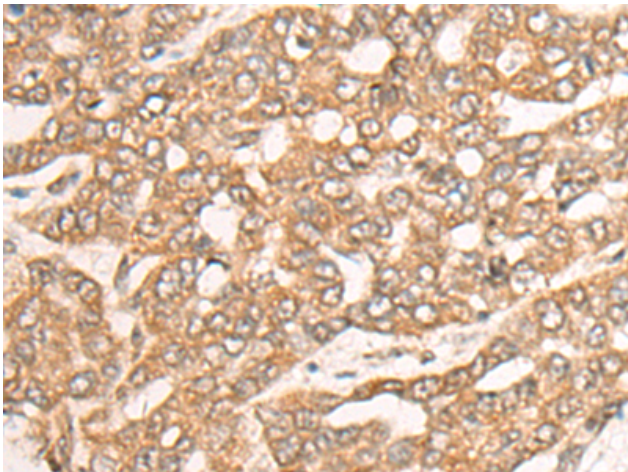
**Storage & Shipping:** Store at -20°C. Avoid repeated freezing and thawing



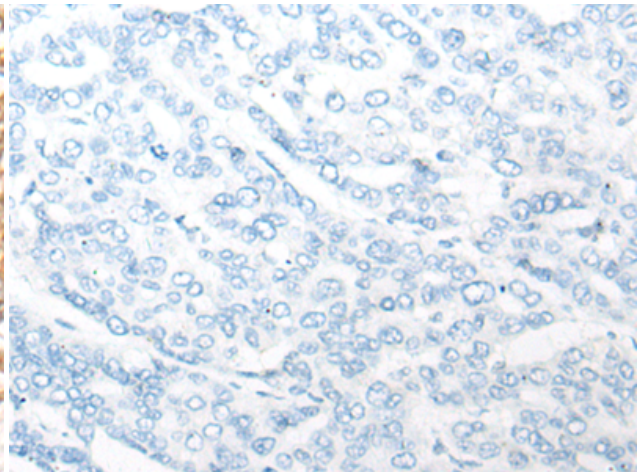
Immunohistochemistry analysis of paraffin embedded Human thyroid cancer tissue using 218485 (CHERP Antibody) at a dilution of 1/20 (Nucleus or Cytoplasm).



In comparison with the IHC on the left, the same paraffin-embedded Human thyroid cancer tissue is first treated with the fusion protein and then with 218485 (Anti-CHERP Antibody) at dilution 1/20.



The image on the left is immunohistochemistry of paraffin-embedded Human liver cancer tissue using 218485 (Anti-CHERP Antibody) at a dilution of 1/20.



In comparison with the IHC on the left, the same paraffin-embedded Human liver cancer tissue is first treated with fusion protein and then with D224536 (Anti-CHERP Antibody) at dilution 1/20.