

CHGB RABBIT PAB

Cat.#: S219695

Product Name: Anti-CHGB Rabbit Polyclonal Antibody

Synonyms: SCG1

UNIPROT ID: P05060 (Gene Accession - NP_001810)

Background: This gene encodes a tyrosine-sulfated secretory protein abundant in peptidergic endocrine cells and neurons. This protein may serve as a precursor for regulatory peptides.

Immunogen: Synthetic peptide of human CHGB

Applications: ELISA, IHC

Recommended Dilutions: IHC: 30-150; ELISA: 2000-10000

Host Species: Rabbit

Clonality: Rabbit Polyclonal

Isotype: Immunogen-specific rabbit IgG

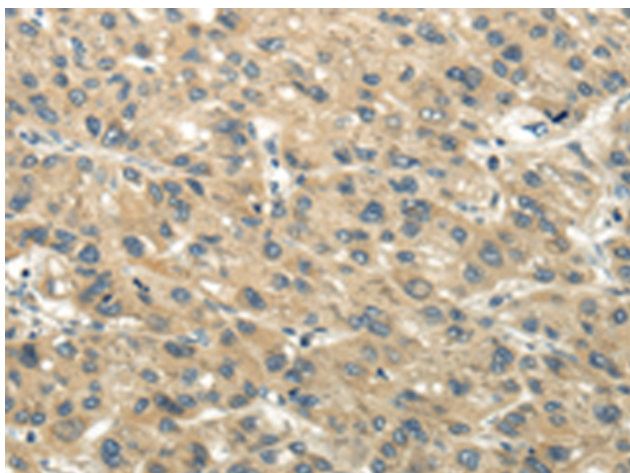
Purification: Antigen affinity purification

Species Reactivity: Human, Mouse, Rat

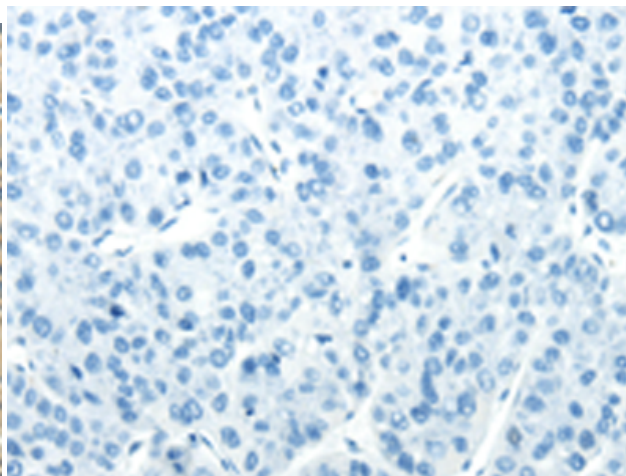
Constituents: PBS (without Mg²⁺ and Ca²⁺), pH 7.4, 150 mM NaCl, 0.05% Sodium Azide and 40% glycerol

Research Areas: Signal Transduction, Neuroscience

Storage & Shipping: Store at -20°C. Avoid repeated freezing and thawing



Immunohistochemistry analysis of paraffin embedded Human liver cancer tissue using 219695(CHGB Antibody) at a dilution of 1/40(Cytoplasm).



In comparison with the IHC on the left, the same paraffin-embedded Human liver cancer tissue is first treated with the synthetic peptide and then with 219695(Anti-CHGB Antibody) at dilution 1/40.