

## CHIA RABBIT PAB

**Cat.#:** S218487

**Product Name:** Anti-CHIA Rabbit Polyclonal Antibody

**Synonyms:** CHIT2; AMCASE; TSAI902

**UNIPROT ID:** Q9BZP6 (Gene Accession - BC036339 )

**Background:** The protein encoded by this gene degrades chitin, which is found in the cell wall of most fungi as well as in arthropods and some nematodes. The encoded protein can also stimulate interleukin 13 expression, and variations in this gene can lead to asthma susceptibility. Several transcript variants encoding a few different isoforms have been found for this gene.

**Immunogen:** Fusion protein of human CHIA

**Applications:** ELISA, WB, IHC

**Recommended Dilutions:** IHC: 100-300;WB: 1000-5000;ELISA: 5000-10000

**Host Species:** Rabbit

**Clonality:** Rabbit Polyclonal

**Isotype:** Immunogen-specific rabbit IgG

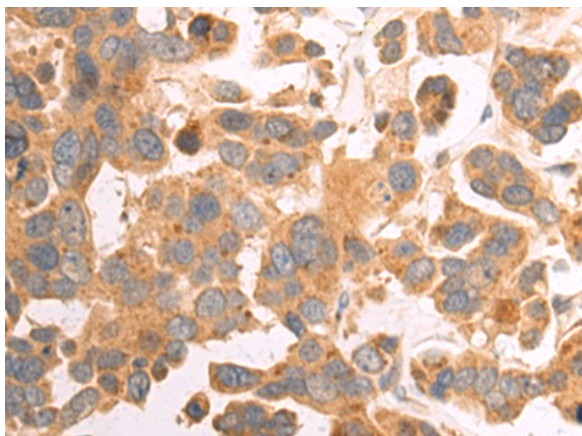
**Purification:** Antigen affinity purification

**Species Reactivity:** Human, Mouse

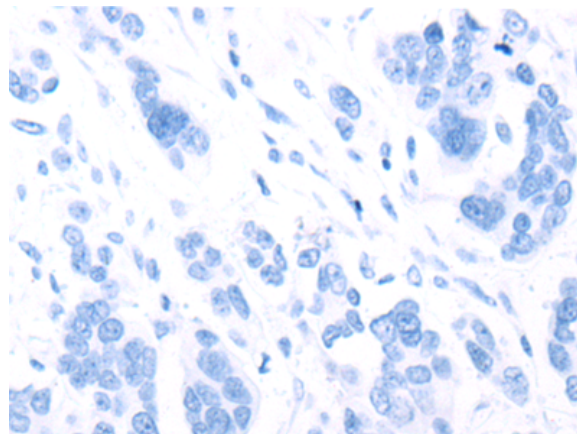
**Constituents:** PBS (without Mg<sup>2+</sup> and Ca<sup>2+</sup>), pH 7.4, 150 mM NaCl, 0.05% Sodium Azide and 40% glycerol

**Research Areas:** Immunology, Signal Transduction

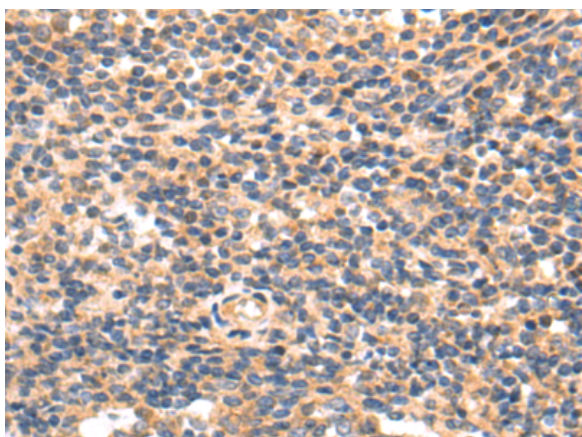
**Storage & Shipping:** Store at -20°C. Avoid repeated freezing and thawing



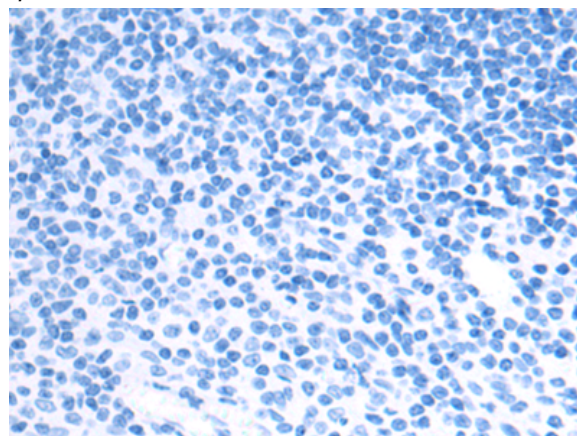
Immunohistochemistry analysis of paraffin embedded Human colorectal cancer tissue using 218487(CHIA Antibody) at a dilution of 1/115(Cytoplasm).



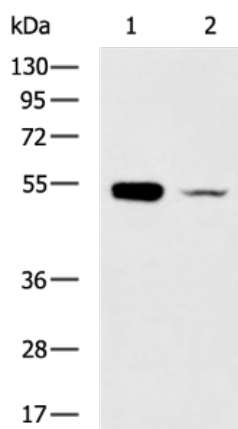
In comparison with the IHC on the left, the same paraffin-embedded Human colorectal cancer tissue is first treated with the fusion protein and then with 218487(Anti-CHIA Antibody) at dilution 1/115.



The image on the left is immunohistochemistry of paraffin-embedded Human tonsil tissue using 218487(Anti-CHIA Antibody) at a dilution of 1/115.



In comparison with the IHC on the left, the same paraffin-embedded Human tonsil tissue is first treated with fusion protein and then with D224539(Anti-CHIA Antibody) at dilution 1/115.



Gel: 8%SDS-PAGE, Lysate: 40  $\mu$ g;  
Lane 1-2: Mouse stomach tissue, Mouse liver tissue lysates;  
Primary antibody: 218487(CHIA Antibody) at dilution 1/800;  
Secondary antibody: HRP-conjugated Goat anti rabbit IgG at 1/5000 dilution;  
Exposure time: 3 seconds



# Product Description

Pioneering GTPase and Oncogene Product Development since 2010

---