

## CHKA RABBIT PAB

**Cat.#:** S221733

**Product Name:** Anti-CHKA Rabbit Polyclonal Antibody

**Synonyms:** CK; EK; CHK; CKI

**UNIPROT ID:** P35790 (Gene Accession - NP\_001268 )

**Background:** The major pathway for the biosynthesis of phosphatidylcholine occurs via the CDP-choline pathway. The protein encoded by this gene is the initial enzyme in the sequence and may play a regulatory role. The encoded protein also catalyzes the phosphorylation of ethanolamine. Two transcript variants encoding different isoforms have been found for this gene.

**Immunogen:** Synthetic peptide of human CHKA

**Applications:** ELISA, WB, IHC

**Recommended Dilutions:** IHC: 25-50;WB: 200-1000;ELISA: 5000-10000

**Host Species:** Rabbit

**Clonality:** Rabbit Polyclonal

**Isotype:** Immunogen-specific rabbit IgG

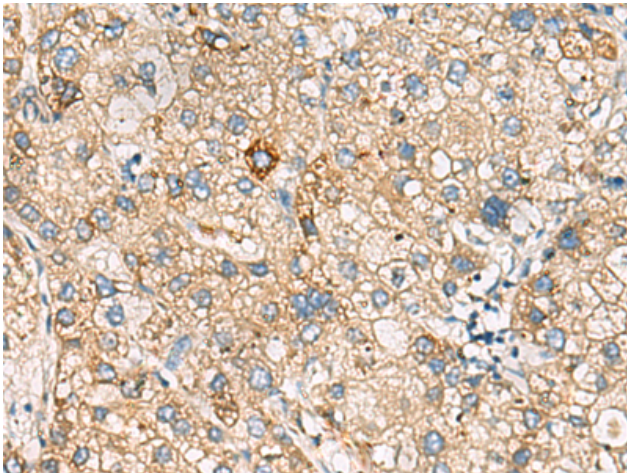
**Purification:** Antigen affinity purification

**Species Reactivity:** Human

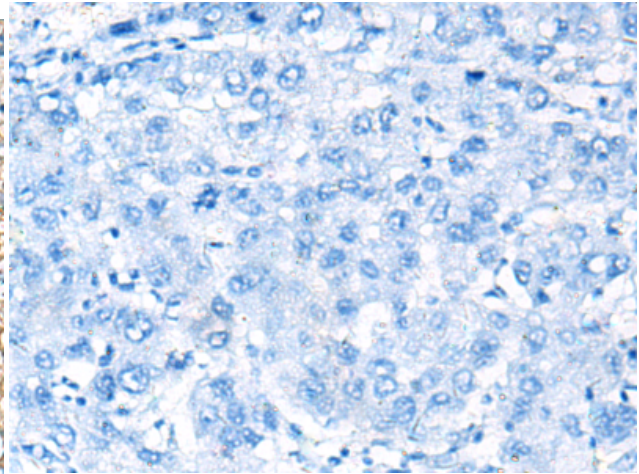
**Constituents:** PBS (without Mg<sup>2+</sup> and Ca<sup>2+</sup>), pH 7.4, 150 mM NaCl, 0.05% Sodium Azide and 40% glycerol

**Research Areas:** Metabolism

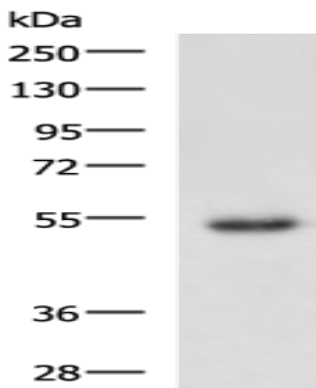
**Storage & Shipping:** Store at -20°C. Avoid repeated freezing and thawing



Immunohistochemistry analysis of paraffin embedded Human liver cancer tissue using 221733(CHKA Antibody) at a dilution of 1/25(Cytoplasm).



In comparison with the IHC on the left, the same paraffin-embedded Human liver cancer tissue is first treated with the synthetic peptide and then with 221733(Anti-CHKA Antibody) at dilution 1/25.



Gel: 8%SDS-PAGE, Lysate: 40  $\mu$ g;  
Lane: Human placenta tissue lysate;  
Primary antibody: 221733(CHKA Antibody) at dilution 1/200;  
Secondary antibody: HRP-conjugated Goat anti rabbit IgG at 1/5000 dilution;  
Exposure time: 10 minutes