

CHMP4B RABBIT PAB

Cat.#: S217285

Product Name: Anti-CHMP4B Rabbit Polyclonal Antibody

Synonyms: SNF7; CTPP3; Shax1; CHMP4A; SNF7-2; VPS32B; CTRCT31; Vps32-2; C20orf178; dJ553F4.4

UNIPROT ID: Q9H444 (Gene Accession - BC033859)

Background: This gene encodes a member of the chromatin-modifying protein/charged multivesicular body protein (CHMP) protein family. The protein is part of the endosomal sorting complex required for transport (ESCRT) complex III (ESCRT-III), which functions in the sorting of endocytosed cell-surface receptors into multivesicular endosomes. The ESCRT machinery also functions in the final abscission stage of cytokinesis and in the budding of enveloped viruses such as HIV-1.

Immunogen: Fusion protein of human CHMP4B

Applications: ELISA, IHC

Recommended Dilutions: IHC: 50-200; ELISA: 2000-5000

Host Species: Rabbit

Clonality: Rabbit Polyclonal

Isotype: Immunogen-specific rabbit IgG

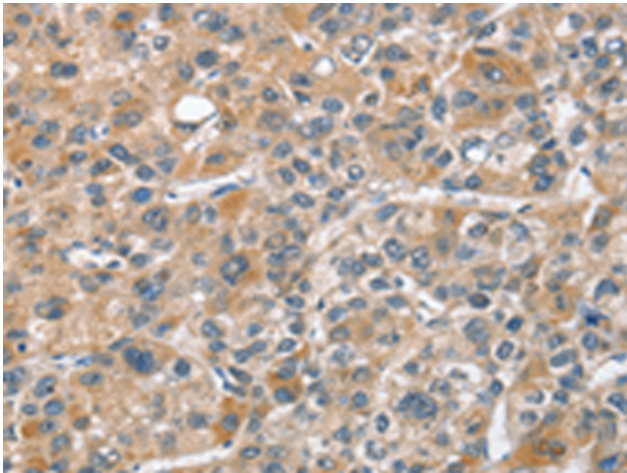
Purification: Antigen affinity purification

Species Reactivity: Human, Mouse

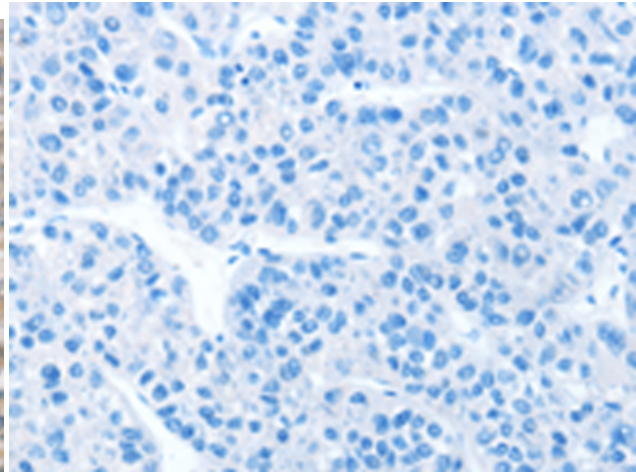
Constituents: PBS (without Mg²⁺ and Ca²⁺), pH 7.4, 150 mM NaCl, 0.05% Sodium Azide and 40% glycerol

Research Areas: Signal Transduction, Cancer

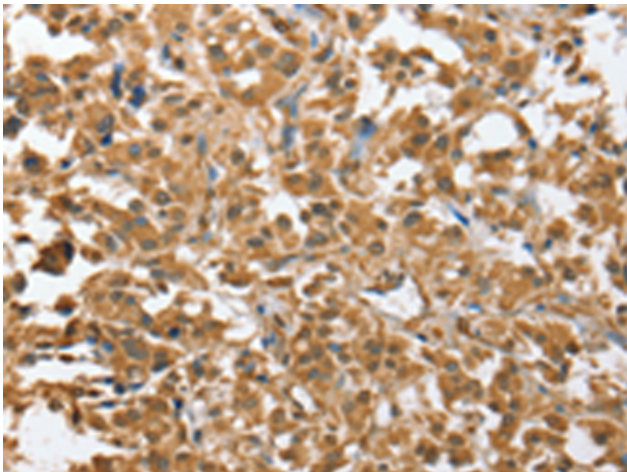
Storage & Shipping: Store at -20°C. Avoid repeated freezing and thawing



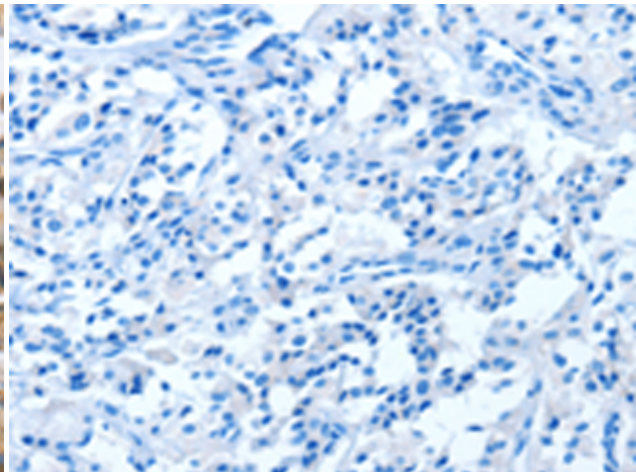
Immunohistochemistry analysis of paraffin embedded Human liver cancer tissue using 217285 (CHMP4B Antibody) at a dilution of 1/40 (Cytoplasm).



In comparison with the IHC on the left, the same paraffin-embedded Human liver cancer tissue is first treated with the fusion protein and then with 217285 (Anti-CHMP4B Antibody) at dilution 1/40.



The image on the left is immunohistochemistry of paraffin-embedded Human thyroid cancer tissue using 217285 (Anti-CHMP4B Antibody) at a dilution of 1/40.



In comparison with the IHC on the left, the same paraffin-embedded Human thyroid cancer tissue is first treated with fusion protein and then with D222110 (Anti-CHMP4B Antibody) at dilution 1/40.