

CHOLINE ACETYLTRANSFERASE RABBIT MAB

Cat.#: N262034

Product Name: Anti-Choline Acetyltransferase Rabbit Monoclonal Antibody

Synonyms: CHAT; Choline O-acetyltransferase; CHOACTase; ChAT; Choline acetylase

UNIPROT ID: P28329

Background: Catalyzes the reversible synthesis of acetylcholine (ACh) from acetyl CoA and choline at cholinergic synapses.

Immunogen: A synthetic peptide of human Choline Acetyltransferase

Applications: WB, ICC/IF, IP

Recommended Dilutions: WB: 1/500-1/1000 IF: 1/50-1/200 IP: 1/20

Host Species: Rabbit

Clonality: Rabbit Monoclonal

Clone ID: R07-1G8

MW: Calculated MW: 83 kDa; Observed MW: 72 kDa

Isotype: IgG

Purification: Affinity Purified

Species Reactivity: Mouse, Rat

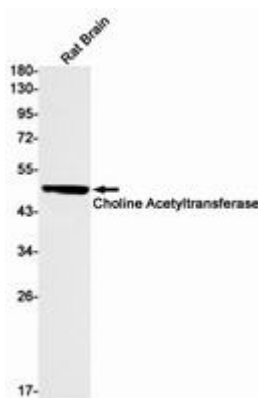
Conjugation: Unconjugated

Modification: Unmodified

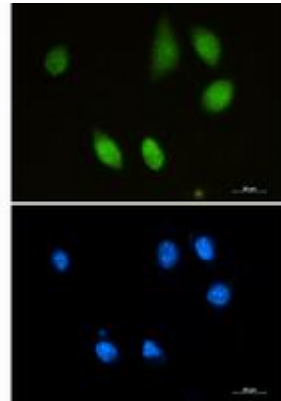
Constituents: PBS (without Mg²⁺ and Ca²⁺), pH 7.3 containing 50% glycerol, 0.5% BSA and 0.02% sodium azide

Research Areas: Neuroscience Cholinergic Neurons

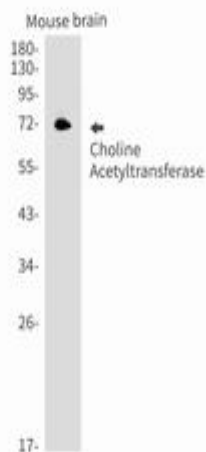
Storage & Shipping: Store at -20°C. Avoid repeated freezing and thawing



Western blot analysis of Choline Acetyltransferase in rat Brain lysates using Choline Acetyltransferase antibody



Immunocytochemistry analysis of Choline Acetyltransferase (green) in SH-SY5Y using Choline Acetyltransferase antibody, and DAPI (blue).



Western blot analysis of Choline Acetyltransferase in mouse brain lysates using Choline Acetyltransferase antibody.