

## CHRAC1 RABBIT PAB

**Cat.#:** S218493

**Product Name:** Anti-CHRAC1 Rabbit Polyclonal Antibody

**Synonyms:** YCLI; CHARC1; CHARC15; CHRAC-1; CHRAC15; CHRAC-15

**UNIPROT ID:** Q9NRG0 (Gene Accession - BC015891)

**Background:** CHRAC1 is a histone-fold protein that interacts with other histone-fold proteins to bind DNA in a sequence-independent manner. These histone-fold protein dimers combine within larger enzymatic complexes for DNA transcription, replication, and packaging.

**Immunogen:** Fusion protein of human CHRAC1

**Applications:** ELISA, IHC

**Recommended Dilutions:** IHC: 25-100; ELISA: 5000-10000

**Host Species:** Rabbit

**Clonality:** Rabbit Polyclonal

**Isotype:** Immunogen-specific rabbit IgG

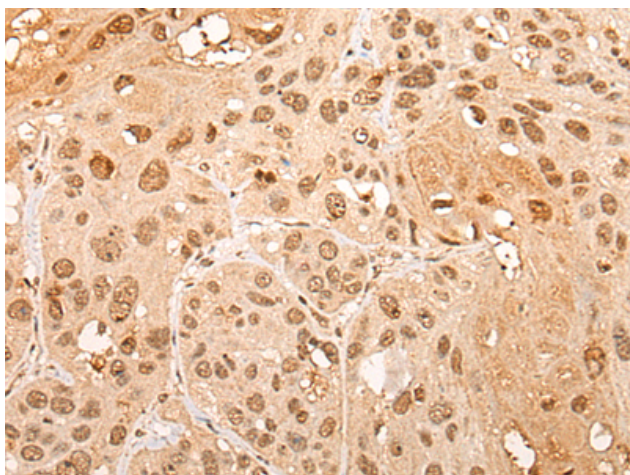
**Purification:** Antigen affinity purification

**Species Reactivity:** Human

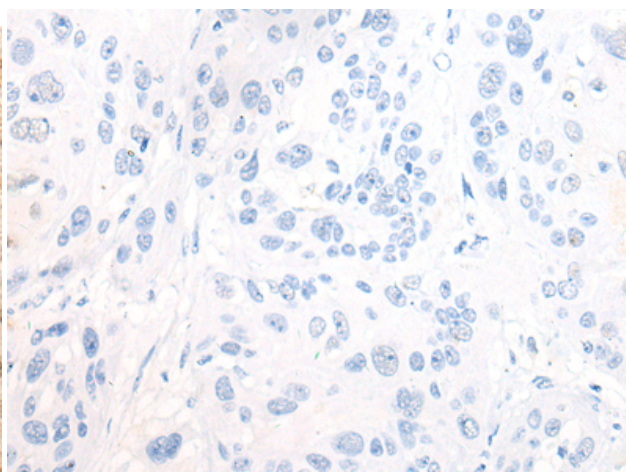
**Constituents:** PBS (without Mg<sup>2+</sup> and Ca<sup>2+</sup>), pH 7.4, 150 mM NaCl, 0.05% Sodium Azide and 40% glycerol

**Research Areas:** Epigenetics and Nuclear Signaling

**Storage & Shipping:** Store at -20°C. Avoid repeated freezing and thawing



Immunohistochemistry analysis of paraffin embedded Human esophagus cancer tissue using 218493(CHRAC1 Antibody) at a dilution of 1/20(Nucleus).



In comparison with the IHC on the left, the same paraffin-embedded Human esophagus cancer tissue is first treated with the fusion protein and then with 218493(Anti-CHRAC1 Antibody) at dilution 1/20.