

CHRD1 RABBIT PAB

Cat.#: S221091

Product Name: Anti-CHRD1 Rabbit Polyclonal Antibody

Synonyms: CHL; MGC1; MGCN; VOPT; NRLN1; dA141H5.1

UNIPROT ID: Q9BU40 (Gene Accession - NP_660277)

Background: This gene encodes an antagonist of bone morphogenetic protein 4. The encoded protein may play a role in topographic retinotectal projection and in the regulation of retinal angiogenesis in response to hypoxia. Alternatively spliced transcript variants encoding different isoforms have been described.

Immunogen: Synthetic peptide of human CHRD1

Applications: ELISA, WB, IHC

Recommended Dilutions: IHC: 25-100;WB: 200-1000;ELISA: 1000-2000

Host Species: Rabbit

Clonality: Rabbit Polyclonal

Isotype: Immunogen-specific rabbit IgG

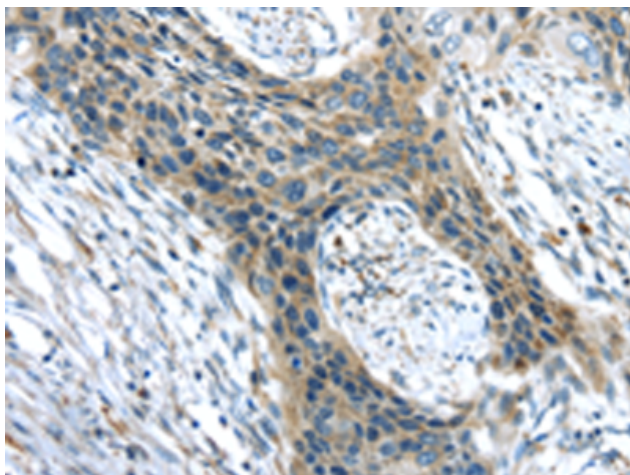
Purification: Antigen affinity purification

Species Reactivity: Human, Mouse, Rat

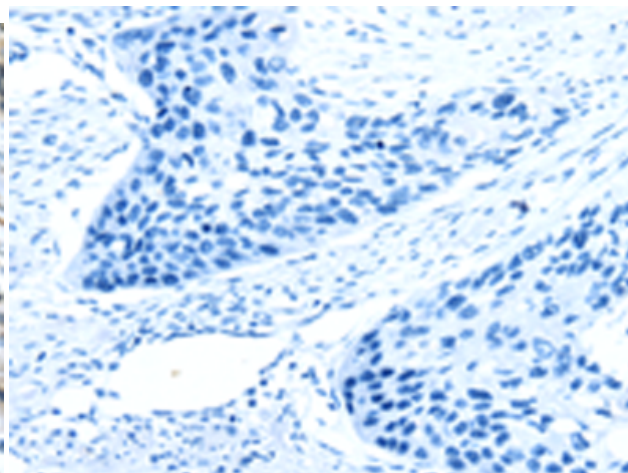
Constituents: PBS (without Mg²⁺ and Ca²⁺), pH 7.4, 150 mM NaCl, 0.05% Sodium Azide and 40% glycerol

Research Areas: Neuroscience, Stem Cells

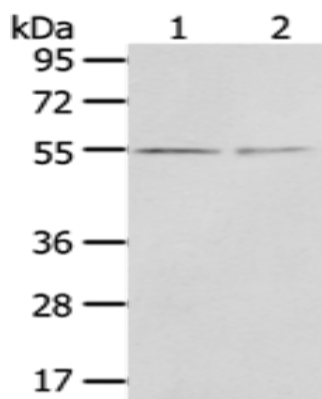
Storage & Shipping: Store at -20°C. Avoid repeated freezing and thawing



Immunohistochemistry analysis of paraffin embedded Human esophagus cancer tissue using 221091(CHRDL1 Antibody) at a dilution of 1/35(Cytoplasm).



In comparison with the IHC on the left, the same paraffin-embedded Human esophagus cancer tissue is first treated with the synthetic peptide and then with 221091(Anti-CHRDL1 Antibody) at dilution 1/35.



Gel: 8%SDS-PAGE, Lysate: 40 μ g;
 Lane 1-2: 293T cells, Human normal kidney tissue;
 Primary antibody: 221091(CHRDL1 Antibody) at dilution 1/400;
 Secondary antibody: Goat anti rabbit IgG at 1/8000 dilution;
 Exposure time: 3 minutes