

## CHRM4 RABBIT PAB

**Cat.#:** S219696

**Product Name:** Anti-CHRM4 Rabbit Polyclonal Antibody

**Synonyms:** HM4; M4R

**UNIPROT ID:** P08173 (Gene Accession - BC095546 )

**Background:** The muscarinic cholinergic receptors belong to a larger family of G protein-coupled receptors. The functional diversity of these receptors is defined by the binding of acetylcholine and includes cellular responses such as adenylate cyclase inhibition, phosphoinositide degeneration, and potassium channel mediation. Muscarinic receptors influence many effects of acetylcholine in the central and peripheral nervous system. The clinical implications of this receptor are unknown; however, mouse studies link its function to adenylyl cyclase inhibition.

**Immunogen:** Synthetic peptide of human CHRM4

**Applications:** ELISA, WB, IHC

**Recommended Dilutions:** IHC: 50-200;WB: 1000-5000;ELISA: 5000-10000

**Host Species:** Rabbit

**Clonality:** Rabbit Polyclonal

**Isotype:** Immunogen-specific rabbit IgG

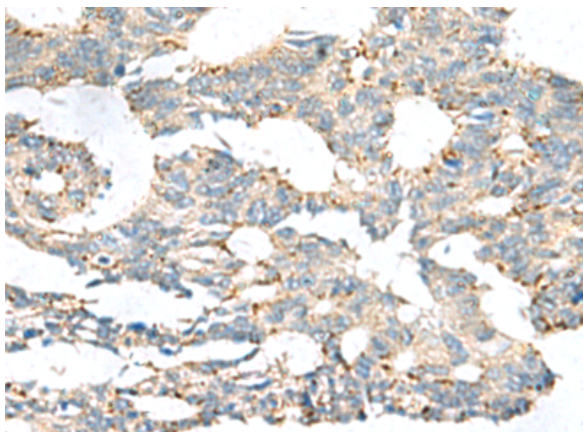
**Purification:** Antigen affinity purification

**Species Reactivity:** Human, Mouse, Rat

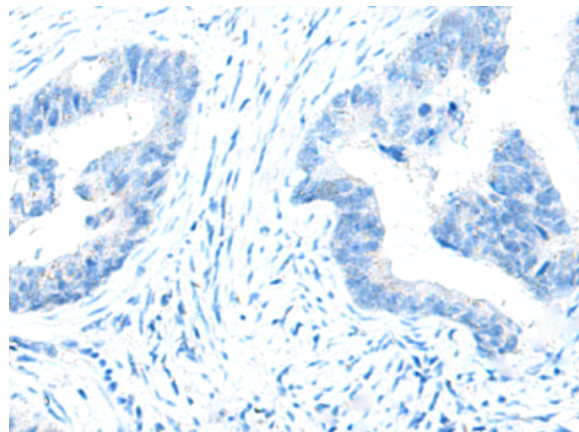
**Constituents:** PBS (without Mg<sup>2+</sup> and Ca<sup>2+</sup>), pH 7.4, 150 mM NaCl, 0.05% Sodium Azide and 40% glycerol

**Research Areas:** Neuroscience

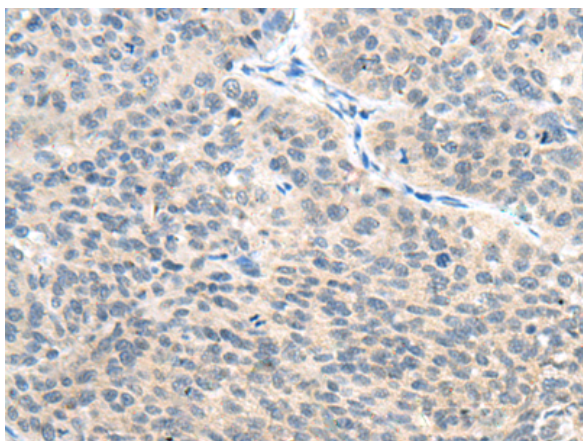
**Storage & Shipping:** Store at -20°C. Avoid repeated freezing and thawing



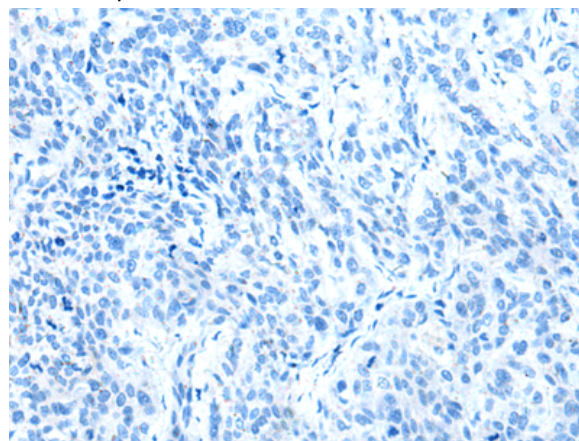
Immunohistochemistry analysis of paraffin embedded Human colorectal cancer tissue using 219696(CHR4 Antibody) at a dilution of 1/80(Cytoplasm).



In comparison with the IHC on the left, the same paraffin-embedded Human colorectal cancer tissue is first treated with the synthetic peptide and then with 219696(Anti-CHR4 Antibody) at dilution 1/80.



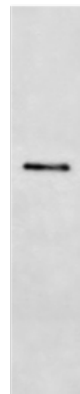
The image on the left is immunohistochemistry of paraffin-embedded Human cervical cancer tissue using 219696(Anti-CHR4 Antibody) at a dilution of 1/80.



In comparison with the IHC on the left, the same paraffin-embedded Human cervical cancer tissue is first treated with synthetic peptide and then with D260172(Anti-CHR4 Antibody) at dilution 1/80.

kDa

130 —  
100 —  
70 —  
55 —  
35 —  
25 —  
15 —



Gel: 8%SDS-PAGE, Lysate: 40 µg;

Lane: A549 cell lysate;

Primary antibody: 219696(CHR4 Antibody) at dilution 1/1600;

Secondary antibody: HRP-conjugated Goat anti rabbit IgG at 1/5000 dilution;

Exposure time: 2 minutes



# Product Description

Pioneering GTPase and Oncogene Product Development since 2010

---