

CHRNA1 RABBIT PAB

Cat.#: S219931

Product Name: Anti-CHRNA1 Rabbit Polyclonal Antibody

Synonyms: ACHRA; ACHRD; CHRNA; CMS1A; CMS1B; CMS2A; FCCMS; SCCMS

UNIPROT ID: P02708 (Gene Accession - NP_000070)

Background: The muscle acetylcholine receptor consists of 5 subunits of 4 different types: 2 alpha subunits and 1 each of the beta, gamma, and delta subunits. This gene encodes an alpha subunit that plays a role in acetylcholine binding/channel gating. Alternatively spliced transcript variants encoding different isoforms have been identified.

Immunogen: Synthetic peptide of human CHRNA1

Applications: ELISA, WB, IHC

Recommended Dilutions: IHC: 50-200;WB: 1000-5000;ELISA: 5000-10000

Host Species: Rabbit

Clonality: Rabbit Polyclonal

Isotype: Immunogen-specific rabbit IgG

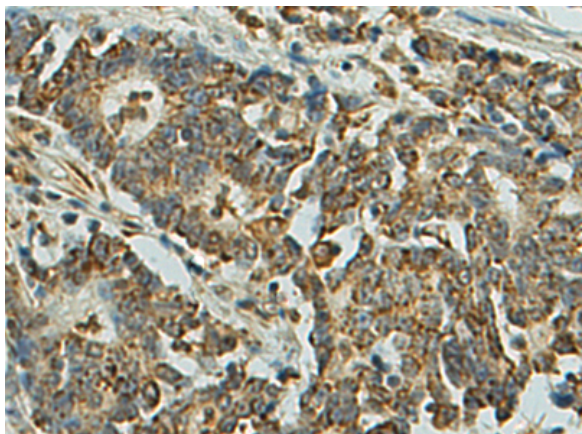
Purification: Antigen affinity purification

Species Reactivity: Human, Mouse, Rat

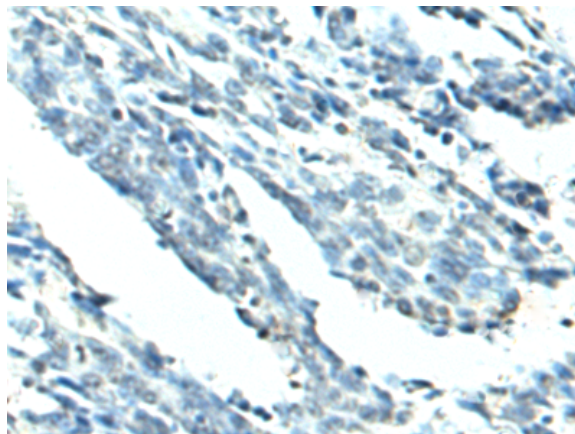
Constituents: PBS (without Mg²⁺ and Ca²⁺), pH 7.4, 150 mM NaCl, 0.05% Sodium Azide and 40% glycerol

Research Areas: Neuroscience

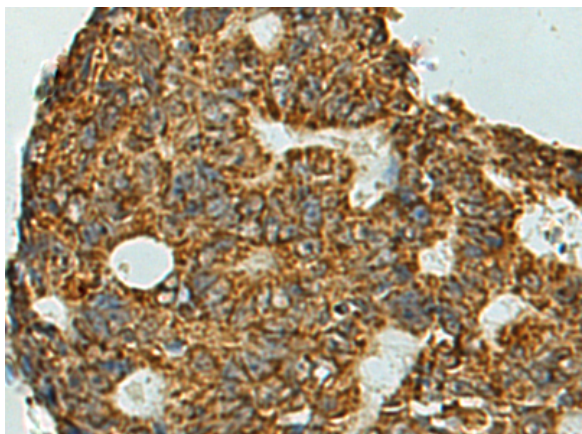
Storage & Shipping: Store at -20°C. Avoid repeated freezing and thawing



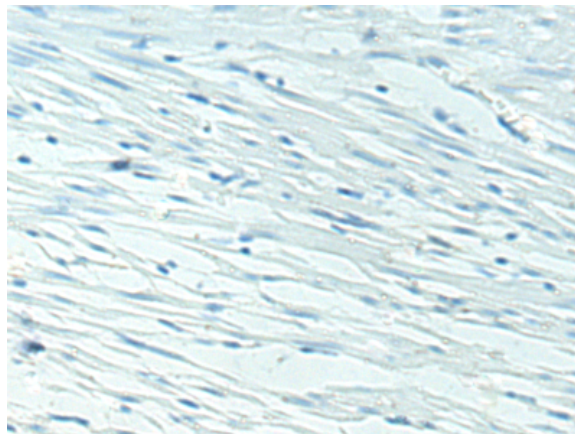
Immunohistochemistry analysis of paraffin embedded Human gastric cancer tissue using 219931(CHRNA1 Antibody) at a dilution of 1/75(Cell membrane).



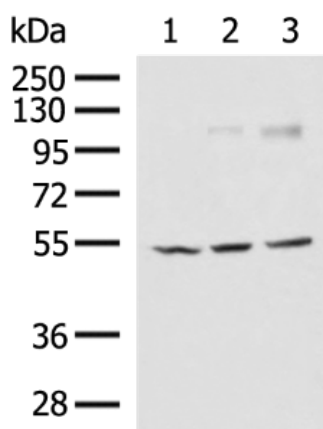
In comparison with the IHC on the left, the same paraffin-embedded Human gastric cancer tissue is first treated with the synthetic peptide and then with 219931(Anti-CHRNA1 Antibody) at dilution 1/75.



The image on the left is immunohistochemistry of paraffin-embedded Human colorectal cancer tissue using 219931(Anti-CHRNA1 Antibody) at a dilution of 1/75.



In comparison with the IHC on the left, the same paraffin-embedded Human colorectal cancer tissue is first treated with synthetic peptide and then with D260643(Anti-CHRNA1 Antibody) at dilution 1/75.



Gel: 8%SDS-PAGE, Lysate: 40 µg;
 Lane 1-3: Mouse skeletal muscle tissue, Jurkat and 231 cell lysates;
 Primary antibody: 219931(CHRNA1 Antibody) at dilution 1/1000;
 Secondary antibody: HRP-conjugated Goat anti rabbit IgG at 1/5000 dilution;
 Exposure time: 30 seconds



Product Description

Pioneering GTPase and Oncogene Product Development since 2010
