

## CHRNA10 RABBIT PAB

**Cat.#:** S219933

**Product Name:** Anti-CHRNA10 Rabbit Polyclonal Antibody

**Synonyms:**

**UNIPROT ID:** Q9GZZ6 (Gene Accession - NP\_065135 )

**Background:** Predicted to enable acetylcholine-gated cation-selective channel activity. Acts upstream of or within positive regulation of cytosolic calcium ion concentration. Predicted to be located in membrane. Predicted to be active in cholinergic synapse and neuron projection. Predicted to be integral component of postsynaptic specialization membrane.

**Immunogen:** Synthetic peptide of human CHRNA10

**Applications:** ELISA, IHC

**Recommended Dilutions:** IHC: 50-100; ELISA: 5000-10000

**Host Species:** Rabbit

**Clonality:** Rabbit Polyclonal

**Isotype:** Immunogen-specific rabbit IgG

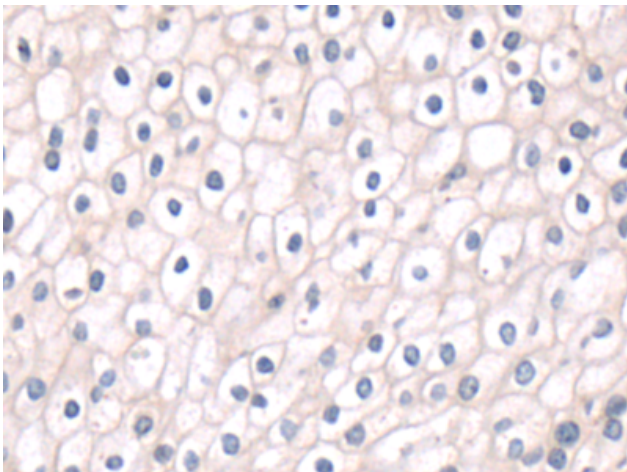
**Purification:** Antigen affinity purification

**Species Reactivity:** Human

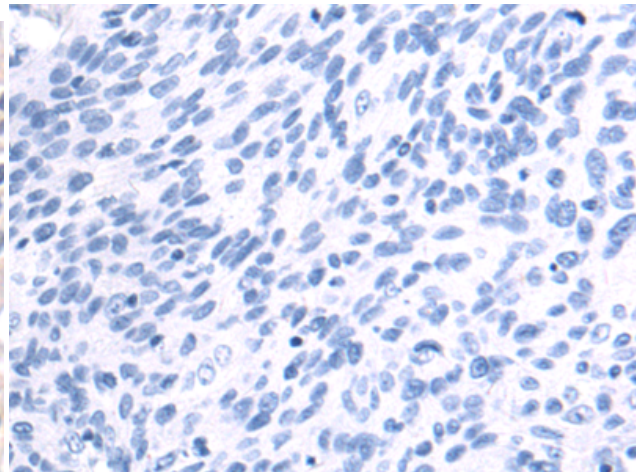
**Constituents:** PBS (without Mg<sup>2+</sup> and Ca<sup>2+</sup>), pH 7.4, 150 mM NaCl, 0.05% Sodium Azide and 40% glycerol

**Research Areas:** Signal Transduction, Neuroscience

**Storage & Shipping:** Store at -20°C. Avoid repeated freezing and thawing



Immunohistochemistry analysis of paraffin embedded Human cervical cancer tissue using 219933(CHRNA10 Antibody) at a dilution of 1/50(Cell membrane).



In comparison with the IHC on the left, the same paraffin-embedded Human cervical cancer tissue is first treated with the synthetic peptide and then with 219933(Anti-CHRNA10 Antibody) at dilution 1/50.