

CHRNA9 RABBIT PAB

Cat.#: S221287

Product Name: Anti-CHRNA9 Rabbit Polyclonal Antibody

Synonyms: NACHRA9; HSA243342

UNIPROT ID: Q9UGM1 (Gene Accession - NP_060051)

Background: This gene is a member of the ligand-gated ionic channel family and nicotinic acetylcholine receptor gene superfamily. It encodes a plasma membrane protein that forms homo- or hetero-oligomeric divalent cation channels. This protein is involved in cochlea hair cell development and is also expressed in the outer hair cells (OHCs) of the adult cochlea.

Immunogen: Synthetic peptide of human CHRNA9

Applications: ELISA, WB, IHC

Recommended Dilutions: IHC: 40-200;WB: 200-1000;ELISA: 5000-10000

Host Species: Rabbit

Clonality: Rabbit Polyclonal

Isotype: Immunogen-specific rabbit IgG

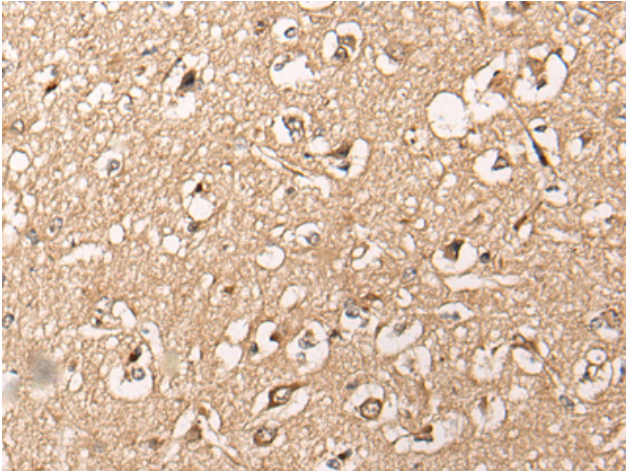
Purification: Antigen affinity purification

Species Reactivity: Human, Rat

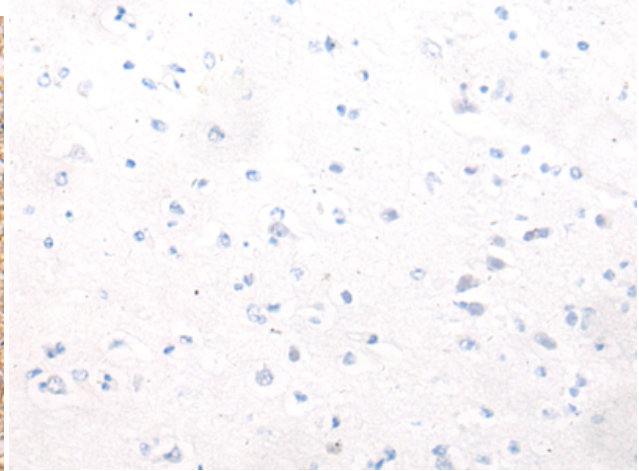
Constituents: PBS (without Mg²⁺ and Ca²⁺), pH 7.4, 150 mM NaCl, 0.05% Sodium Azide and 40% glycerol

Research Areas: Neuroscience

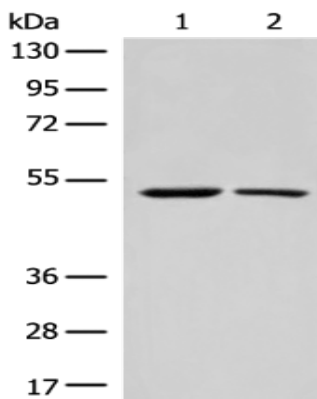
Storage & Shipping: Store at -20°C. Avoid repeated freezing and thawing



Immunohistochemistry analysis of paraffin embedded Human brain tissue using 221287(CHRNA9 Antibody) at a dilution of 1/50(Cell membrane).



In comparison with the IHC on the left, the same paraffin-embedded Human brain tissue is first treated with the synthetic peptide and then with 221287(Anti-CHRNA9 Antibody) at dilution 1/50.



Gel: 8%SDS-PAGE, Lysate: 40 µg;
 Lane 1-2: Human cerebrum tissue and Human cerebella tissue lysates;
 Primary antibody: 221287(CHRNA9 Antibody) at dilution 1/400;
 Secondary antibody: Goat anti rabbit IgG at 1/8000 dilution;
 Exposure time: 30 seconds