

CHUK RABBIT PAB

Cat.#: S213821

Product Name: Anti-CHUK Rabbit Polyclonal Antibody

Synonyms: IKK1; IKKA; IKBKA; TCF16; NFKB1A; IKK-alpha

UNIPROT ID: O15111 (Gene Accession - NP_001269)

Background: This gene encodes a member of the serine/threonine protein kinase family. The encoded protein, a component of a cytokine-activated protein complex that is an inhibitor of the essential transcription factor NF-kappa-B complex phosphorylates sites that trigger the degradation of the inhibitor via the ubiquitination pathway, thereby activating the transcription factor.

Immunogen: Synthetic peptide of human CHUK

Applications: ELISA, WB, IHC

Recommended Dilutions: IHC: 25-100;WB: 200-1000;ELISA: 1000-2000

Host Species: Rabbit

Clonality: Rabbit Polyclonal

Isotype: Immunogen-specific rabbit IgG

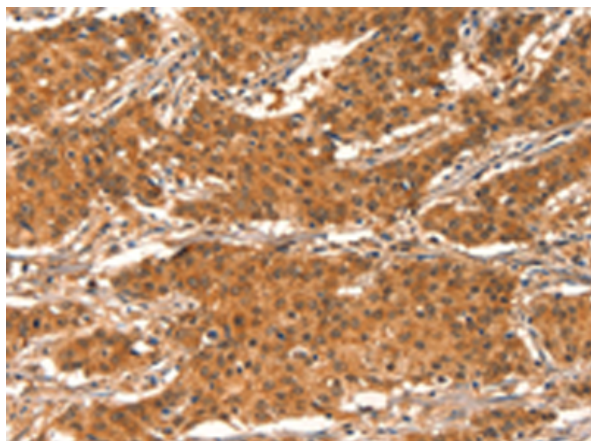
Purification: Antigen affinity purification

Species Reactivity: Human, Mouse

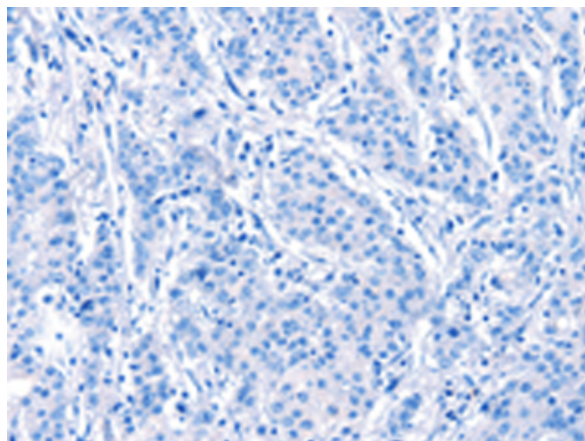
Constituents: PBS (without Mg²⁺ and Ca²⁺), pH 7.4, 150 mM NaCl, 0.05% Sodium Azide and 40% glycerol

Research Areas: Signal Transduction, Epigenetics and Nuclear Signaling, Cardiovascular, Immunology

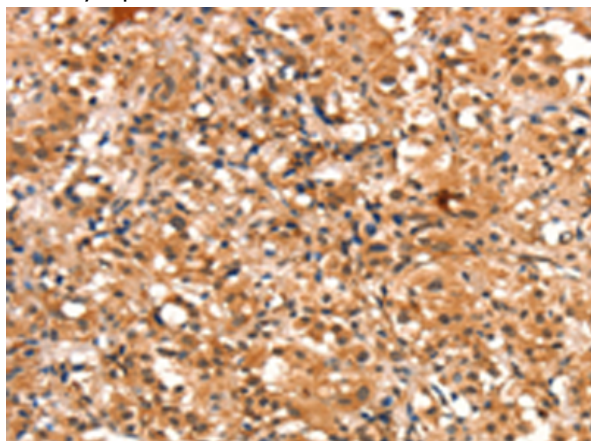
Storage & Shipping: Store at -20°C. Avoid repeated freezing and thawing



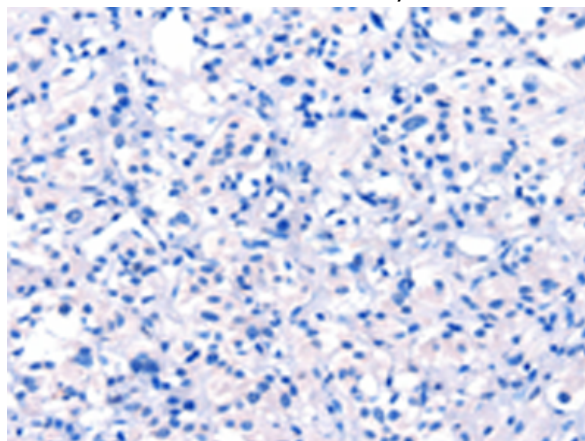
Immunohistochemistry analysis of paraffin embedded Human gastric cancer tissue using 213821(CHUK Antibody) at a dilution of 1/15(Cytoplasm and Nucleus).



In comparison with the IHC on the left, the same paraffin-embedded Human gastric cancer tissue is first treated with the synthetic peptide and then with 213821(Anti-CHUK Antibody) at dilution 1/15.



The image on the left is immunohistochemistry of paraffin-embedded Human thyroid cancer tissue using 213821(Anti-CHUK Antibody) at a dilution of 1/15.



In comparison with the IHC on the left, the same paraffin-embedded Human thyroid cancer tissue is first treated with synthetic peptide and then with D160897(Anti-CHUK Antibody) at dilution 1/15.



Gel: 6%SDS-PAGE, Lysate: 50 µg;
Lane: HeLa cells;
Primary antibody: 213821(CHUK Antibody) at dilution 1/200;
Secondary antibody: Goat anti rabbit IgG at 1/8000 dilution;
Exposure time: 5 minutes



Product Description

Pioneering GTPase and Oncogene Product Development since 2010
