

## CITED1 RABBIT PAB

**Cat.#:** S221739

**Product Name:** Anti-CITED1 Rabbit Polyclonal Antibody

**Synonyms:** MSG1

**UNIPROT ID:** Q99966 (Gene Accession - NP\_004134 )

**Background:** This gene encodes a member of the CREB-binding protein/p300-interacting transactivator with Asp/Glu-rich C-terminal domain (CITED) family of proteins. The encoded protein, also known as melanocyte-specific gene 1, may function as a transcriptional coactivator and may play a role in pigmentation of melanocytes. Alternatively spliced transcript variants have been described.

**Immunogen:** Synthetic peptide of human CITED1

**Applications:** ELISA, WB, IHC

**Recommended Dilutions:** IHC: 30-150;WB: 200-1000;ELISA: 5000-10000

**Host Species:** Rabbit

**Clonality:** Rabbit Polyclonal

**Isotype:** Immunogen-specific rabbit IgG

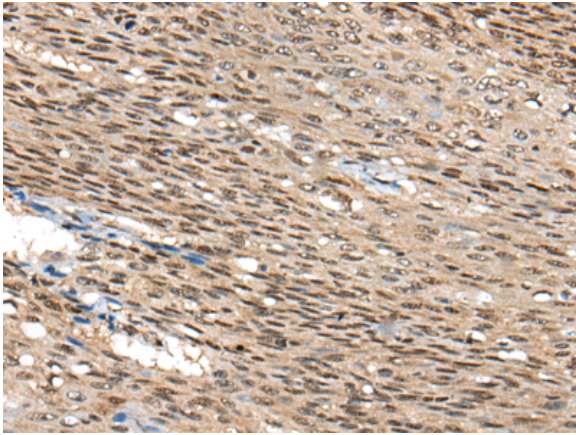
**Purification:** Antigen affinity purification

**Species Reactivity:** Human, Mouse

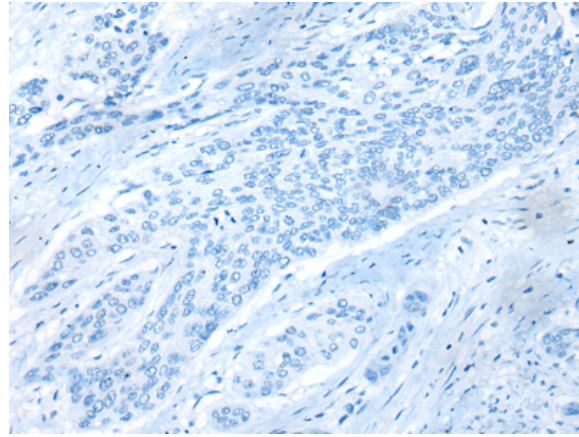
**Constituents:** PBS (without Mg<sup>2+</sup> and Ca<sup>2+</sup>), pH 7.4, 150 mM NaCl, 0.05% Sodium Azide and 40% glycerol

**Research Areas:** Epigenetics and Nuclear Signaling

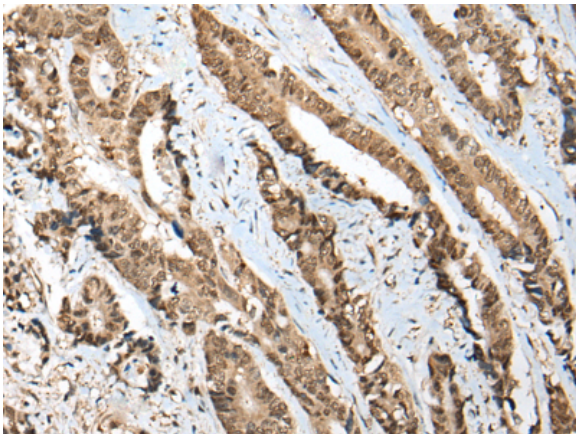
**Storage & Shipping:** Store at -20°C. Avoid repeated freezing and thawing



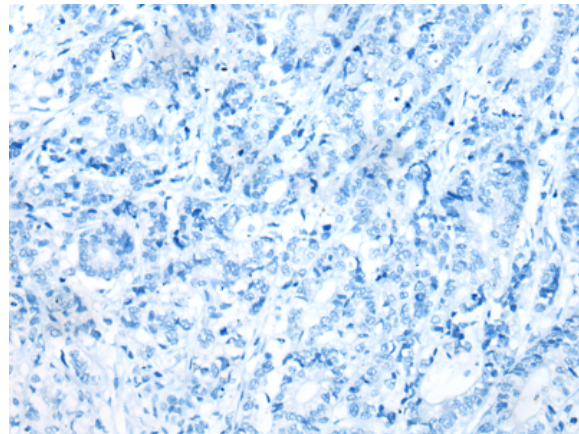
Immunohistochemistry analysis of paraffin embedded Human esophagus cancer tissue using 221739(CITED1 Antibody) at a dilution of 1/45(Cytoplasm and Nucleus).



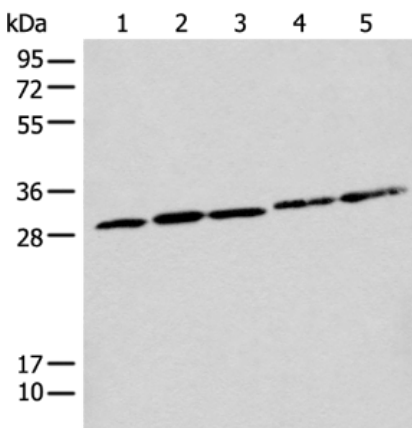
In comparison with the IHC on the left, the same paraffin-embedded Human esophagus cancer tissue is first treated with the synthetic peptide and then with 221739(Anti-CITED1 Antibody) at dilution 1/45.



The image on the left is immunohistochemistry of paraffin-embedded Human thyroid cancer tissue using 221739(Anti-CITED1 Antibody) at a dilution of 1/45.



In comparison with the IHC on the left, the same paraffin-embedded Human thyroid cancer tissue is first treated with synthetic peptide and then with D263464(Anti-CITED1 Antibody) at dilution 1/45.



Gel: 12%SDS-PAGE, Lysate: 40 µg;  
 Lane 1-5: A375 cell, Human testis tissue, A172 and A431 cell, Human fetal liver tissue lysates;  
 Primary antibody: 221739(CITED1 Antibody) at dilution 1/300;  
 Secondary antibody: Goat anti rabbit IgG at 1/8000 dilution;  
 Exposure time: 10 seconds



# Product Description

Pioneering GTPase and Oncogene Product Development since 2010

---