

## CITED2 RABBIT PAB

**Cat.#:** S221740

**Product Name:** Anti-CITED2 Rabbit Polyclonal Antibody

**Synonyms:** ASD8; MRG1; VSD2; MRG-1; P35SRJ

**UNIPROT ID:** Q99967 (Gene Accession - NP\_006070 )

**Background:** The protein encoded by this gene inhibits transactivation of HIF1A-induced genes by competing with binding of hypoxia-inducible factor 1-alpha to p300-CHI. Mutations in this gene are a cause of cardiac septal defects. Alternatively spliced transcript variants encoding multiple isoforms have been observed for this gene.

**Immunogen:** Synthetic peptide of human CITED2

**Applications:** ELISA, IHC

**Recommended Dilutions:** IHC: 25-100; ELISA: 5000-10000

**Host Species:** Rabbit

**Clonality:** Rabbit Polyclonal

**Isotype:** Immunogen-specific rabbit IgG

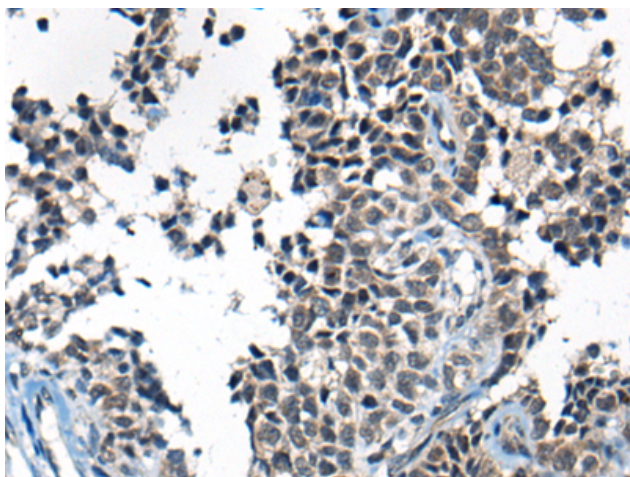
**Purification:** Antigen affinity purification

**Species Reactivity:** Human, Mouse

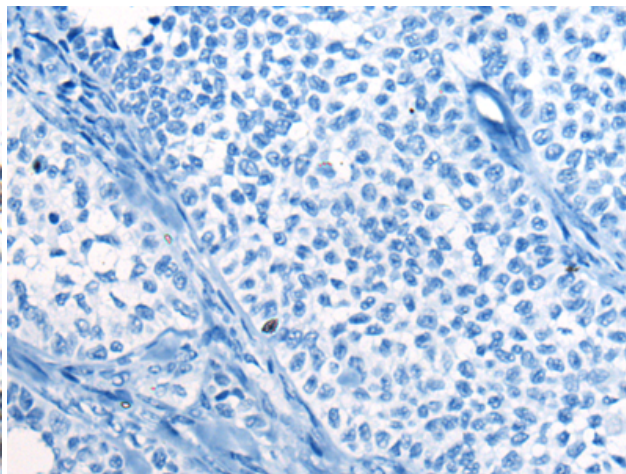
**Constituents:** PBS (without Mg<sup>2+</sup> and Ca<sup>2+</sup>), pH 7.4, 150 mM NaCl, 0.05% Sodium Azide and 40% glycerol

**Research Areas:** Cardiovascular, Epigenetics and Nuclear Signaling, Cancer, Metabolism

**Storage & Shipping:** Store at -20°C. Avoid repeated freezing and thawing



Immunohistochemistry analysis of paraffin embedded Human ovarian cancer tissue using 221740(CITED2 Antibody) at a dilution of 1/40(Nucleus).



In comparison with the IHC on the left, the same paraffin-embedded Human ovarian cancer tissue is first treated with the synthetic peptide and then with 221740(Anti-CITED2 Antibody) at dilution 1/40.