

CITED4 RABBIT PAB

Cat.#: S221741

Product Name: Anti-CITED4 Rabbit Polyclonal Antibody

Synonyms:

UNIPROT ID: Q96RK1 (Gene Accession - NP_597724)

Background: The protein encoded by this intronless gene belongs to the CITED family of transcriptional coactivators that bind to several proteins, including CREB-binding protein (CBP) and p300, via a conserved 32 aa C-terminal motif, and regulate gene transcription. This protein also interacts with transcription factor AP2 (TFAP2), and thus may function as a co-activator for TFAP2. Hypermethylation and transcriptional downregulation of this gene has been observed in oligodendroglial tumors with deletions of chromosomal arms 1p and 19q, and associated with longer recurrence-free and overall survival of patients with oligodendroglial tumors.

Immunogen: Synthetic peptide of human CITED4

Applications: ELISA, IHC

Recommended Dilutions: IHC: 30-150; ELISA: 5000-10000

Host Species: Rabbit

Clonality: Rabbit Polyclonal

Isotype: Immunogen-specific rabbit IgG

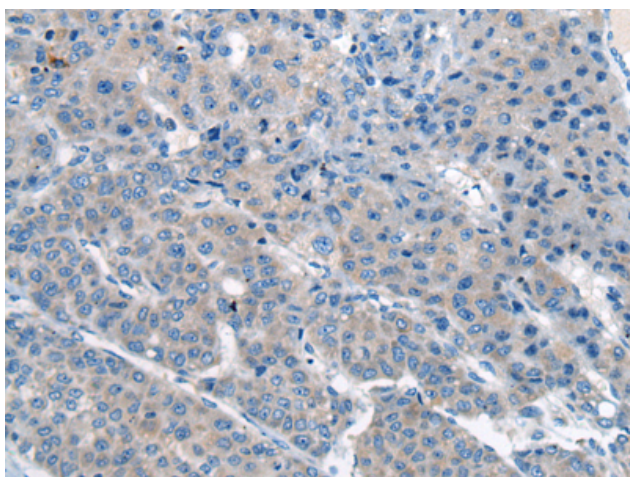
Purification: Antigen affinity purification

Species Reactivity: Human

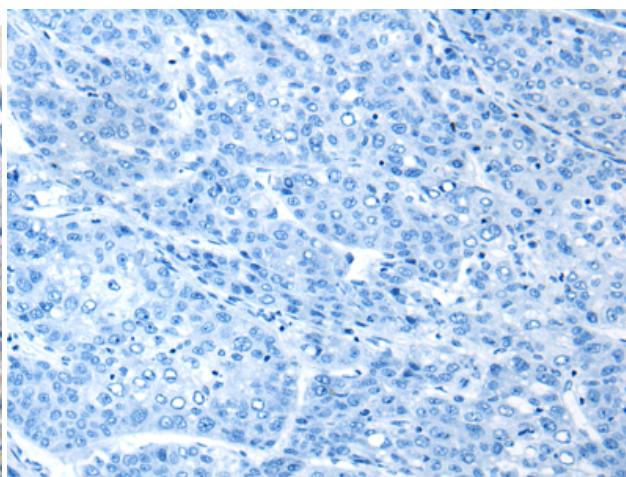
Constituents: PBS (without Mg²⁺ and Ca²⁺), pH 7.4, 150 mM NaCl, 0.05% Sodium Azide and 40% glycerol

Research Areas: Epigenetics and Nuclear Signaling, Cardiovascular

Storage & Shipping: Store at -20°C. Avoid repeated freezing and thawing



Immunohistochemistry analysis of paraffin embedded Human liver cancer tissue using 221741(CITED4 Antibody) at a dilution of 1/65(Cytoplasm).



In comparison with the IHC on the left, the same paraffin-embedded Human liver cancer tissue is first treated with the synthetic peptide and then with 221741(Anti-CITED4 Antibody) at dilution 1/65.