

CITRATE SYNTHETASE RABBIT MAB

Cat.#: N263270

Product Name: Anti-Citrate Synthetase Rabbit Monoclonal Antibody

Synonyms: Citrate synthase; Citrate synthase; mitochondrial; Cs

UNIPROT ID: O75390

Background: Carbohydrate metabolism; tricarboxylic acid cycle; isocitrate from oxaloacetate: step 1/2.

Immunogen: A synthetic peptide of human Citrate synthetase

Applications: WB,IHC-F,IHC-P,ICC/IF,IP

Recommended Dilutions: WB: 1/500-1/1000 IHC: 1/50-1/100 IF: 1/50-1/200 IP: 1/20

Host Species: Rabbit

Clonality: Rabbit Monoclonal

Clone ID: R08-4I1

MW: Calculated MW: 52 kDa; Observed MW: 45 kDa

Isotype: IgG

Purification: Affinity Purified

Species Reactivity: Human,Rat

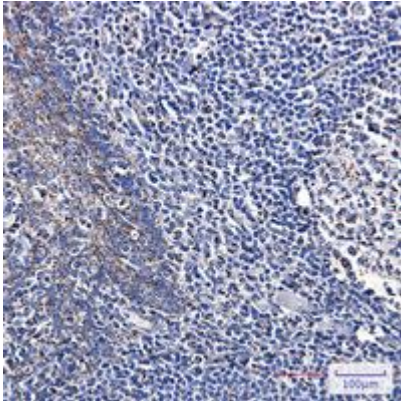
Conjugation: Unconjugated

Modification: Unmodified

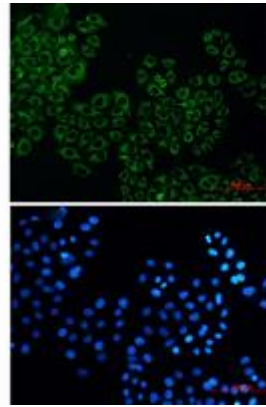
Constituents: PBS (without Mg²⁺ and Ca²⁺), pH 7.3 containing 50% glycerol, 0.5% BSA and 0.02% sodium azide

Research Areas: Signal Transduction

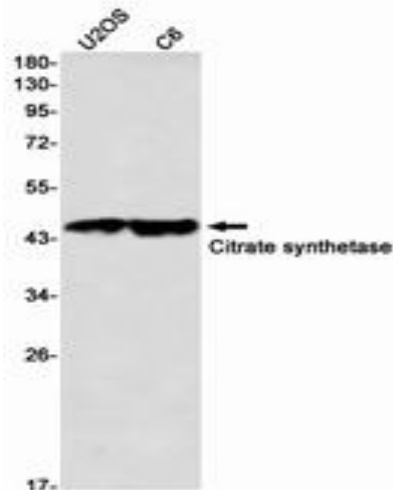
Storage & Shipping: Store at -20°C. Avoid repeated freezing and thawing



Immunohistochemistry analysis of paraffin-embedded Human tonsil using Citrate synthetase antibody. High-pressure and temperature Sodium Citrate pH 6.0 was used for antigen retrieval.



Immunocytochemistry analysis of Citrate Synthetase (green) in HeLa using Citrate Synthetase antibody, and DAPI (blue).



Western blot analysis of Citrate synthetase in U2OS, C6 lysates using Citrate synthetase antibody.