

## CITRATE SYNTHETASE RABBIT MAB

**Cat.#:** N262041

**Product Name:** Anti-Citrate Synthetase Rabbit Monoclonal Antibody

**Synonyms:** Citrate synthase; Citrate synthase; mitochondrial; Cs

**UNIPROT ID:** O75390

**Background:** Carbohydrate metabolism; tricarboxylic acid cycle; isocitrate from oxaloacetate: step 1/2.

**Immunogen:** A synthetic peptide of human Citrate synthetase

**Applications:** WB,IHC-F,IHC-P,ICC/IF

**Recommended Dilutions:** WB: 1/500-1/1000 IHC: 1/50-1/100 IF: 1/50-1/200

**Host Species:** Rabbit

**Clonality:** Rabbit Monoclonal

**Clone ID:** R07-212

**MW:** Calculated MW: 52 kDa; Observed MW: 45 kDa

**Isotype:** IgG

**Purification:** Affinity Purified

**Species Reactivity:** Human,Mouse,Rat

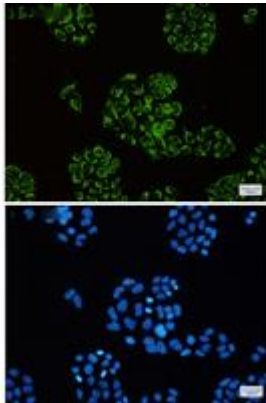
**Conjugation:** Unconjugated

**Modification:** Unmodified

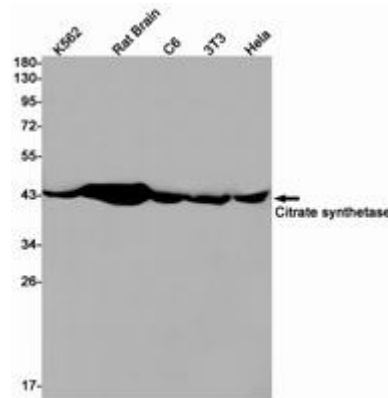
**Constituents:** PBS (without Mg<sup>2+</sup> and Ca<sup>2+</sup>), pH 7.3 containing 50% glycerol, 0.5% BSA and 0.02% sodium azide

**Research Areas:** Signal Transduction

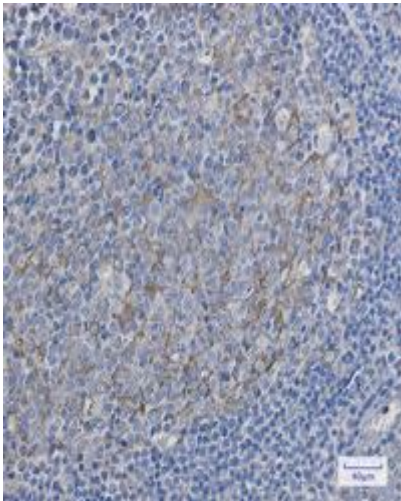
**Storage & Shipping:** Store at -20°C. Avoid repeated freezing and thawing



Immunocytochemistry analysis of Citrate synthetase (green) in HeLa using Citrate synthetase antibody, and DAPI (blue)



Western blot analysis of Citrate synthetase in K562, rat Brain, C6, 3T3, HeLa lysates using Citrate Synthetase antibody.



Immunohistochemistry analysis of paraffin-embedded Human tonsil using Citrate synthetase antibody. High-pressure and temperature Sodium Citrate pH 6.0 was used for antigen retrieval.