

CITRATE SYNTHETASE RABBIT PAB

Cat.#: N225845

Product Name: Anti-Citrate Synthetase Rabbit pAb

Synonyms: Citrate synthase; Citrate synthase; mitochondrial; Cs

UNIPROT ID: O75390

Background: Carbohydrate metabolism; tricarboxylic acid cycle; isocitrate from oxaloacetate: step 1/2.

Immunogen: A synthesized peptide derived from human Citrate synthetase

Applications: WB,IHC-P,ICC/IF,FC

Recommended Dilutions: WB: 1/500-1/1000 IHC: 1/50-1/100 IF: 1/50-1/200 FC: 1/50-1/100

Host Species: Rabbit

Clonality: Rabbit Polyclonal

Clone ID: -

MW: Calculated MW: 52 kDa; Observed MW: 45 kDa

Isotype: IgG

Purification: Affinity Chromatography

Species Reactivity: Human,Mouse,Rat

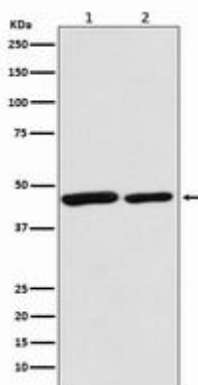
Conjugation: Unconjugated

Modification: Unmodified

Constituents: PBS (without Mg²⁺ and Ca²⁺), pH 7.3 containing 50% glycerol, 0.5% BSA and 0.02% sodium azide

Research Areas: Signal Transduction

Storage & Shipping: Store at -20°C. Avoid repeated freezing and thawing



Western blot analysis of Citrate synthetase in (1) HeLa lysates; (1) mouse spleen lysates using Citrate Synthetase antibody.



Product Description

Pioneering GTPase and Oncogene Product Development since 2010
