

CKII ALPHA RABBIT PAB

Cat.#: N225576

Product Name: Anti-CKII alpha Rabbit pAb

Synonyms: CSNK2A1; CK2A1; Casein kinase II subunit alpha; CK II alpha

UNIPROT ID: P68400

Background: Catalytic subunit of a constitutively active serine/threonine-protein kinase complex that phosphorylates a large number of substrates containing acidic residues C-terminal to the phosphorylated serine or threonine. Regulates numerous cellular processes, such as cell cycle progression, apoptosis and transcription, as well as viral infection. May act as a regulatory node which integrates and coordinates numerous signals leading to an appropriate cellular response.

Immunogen: A synthesized peptide derived from human CKII alpha

Applications: WB,IHC-P,FC

Recommended Dilutions: WB: 1/500-1/1000 IHC: 1/50-1/100 FC: 1/50-1/100

Host Species: Rabbit

Clonality: Rabbit Polyclonal

Clone ID: -

MW: Calculated MW: 45 kDa; Observed MW: 45 kDa

Isotype: IgG

Purification: Affinity Chromatography

Species Reactivity: Human,Mouse,Rat

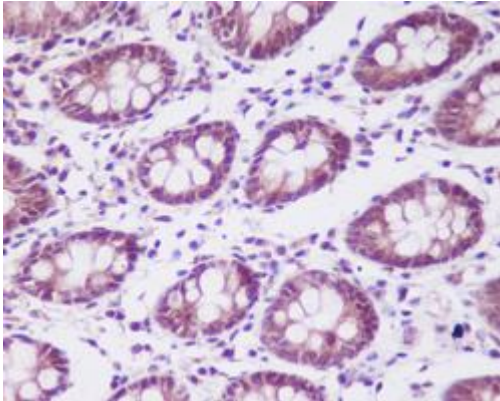
Conjugation: Unconjugated

Modification: Unmodified

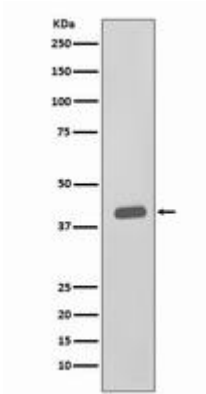
Constituents: PBS (without Mg²⁺ and Ca²⁺), pH 7.3 containing 50% glycerol, 0.5% BSA and 0.02% sodium azide

Research Areas: Epigenetics, Histone phosphorylation

Storage & Shipping: Store at -20°C. Avoid repeated freezing and thawing



Immunohistochemistry analysis of paraffin-embedded Human colon using CKII alpha antibody. High-pressure and temperature Sodium Citrate pH 6.0 was used for antigen retrieval.



Western blot analysis of CKII alpha in HeLa lysates using CKII alpha antibody.