

CKR 1 RABBIT PAB

Cat.#: N225138

Product Name: Anti-CKR 1 Rabbit pAb

Synonyms: C-C motif chemokine receptor 1; CKR1; CD191; CKR-1; HM145; CMKBRI; MIPIaR; SCYAR1

UNIPROT ID: P32246

Background: Receptor for a C-C type chemokine.

Immunogen: Synthetic peptide from human protein at AA range: 151-200

Applications: IHC-P,ELISA

Recommended Dilutions: IHC: 1/50-1/100 ELISA: 1/10000

Host Species: Rabbit

Clonality: Rabbit Polyclonal

Clone ID: -

MW: -

Isotype: IgG

Purification: Affinity Purified

Species Reactivity: Human

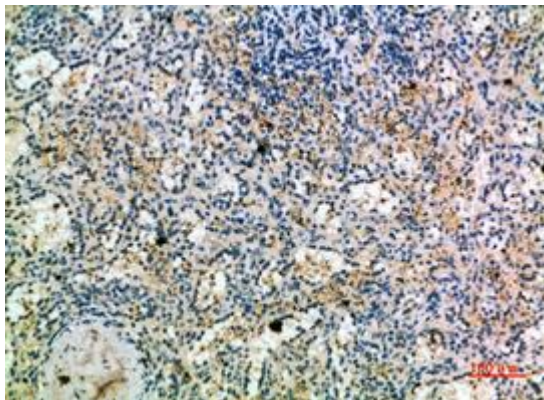
Conjugation: Unconjugated

Modification: Unmodified

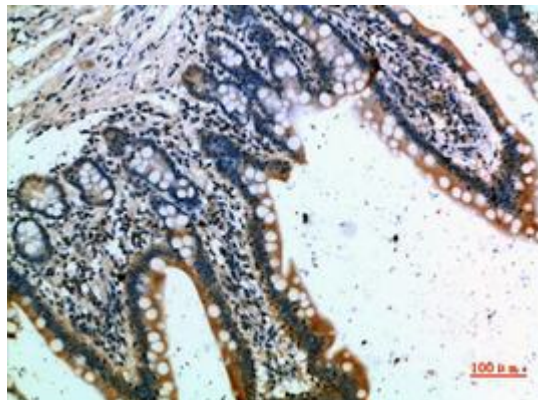
Constituents: PBS (without Mg²⁺ and Ca²⁺), pH 7.3 containing 50% glycerol, 0.5% BSA and 0.02% sodium azide

Research Areas: Immunology

Storage & Shipping: Store at -20°C. Avoid repeated freezing and thawing



Immunohistochemical analysis of paraffin-embedded Human tonsils using CKR 1 antibody. High-pressure and temperature Sodium Citrate pH 6.0 was used for antigen retrieval.



Immunohistochemistry analysis of paraffin-embedded Human small intestine using CKR 1 antibody. High-pressure and temperature Sodium Citrate pH 6.0 was used for antigen retrieval.