

## CLASP1 RABBIT PAB

**Cat.#:** S218505

**Product Name:** Anti-CLASP1 Rabbit Polyclonal Antibody

**Synonyms:** MAST1

**UNIPROT ID:** Q7Z460 (Gene Accession - BC032563 )

**Background:** CLASPs, such as CLASP1, are nonmotor microtubule-associated proteins that interact with CLIPs (e.g., CLIP170; MIM 179838). CLASP1 is involved in the regulation of microtubule dynamics at the kinetochore and throughout the spindle (Maiato et al., 2003 [PubMed 12837247]).

**Immunogen:** Fusion protein of human CLASP1

**Applications:** ELISA, WB, IHC

**Recommended Dilutions:** IHC: 50-200;WB: 500-2000;ELISA: 5000-10000

**Host Species:** Rabbit

**Clonality:** Rabbit Polyclonal

**Isotype:** Immunogen-specific rabbit IgG

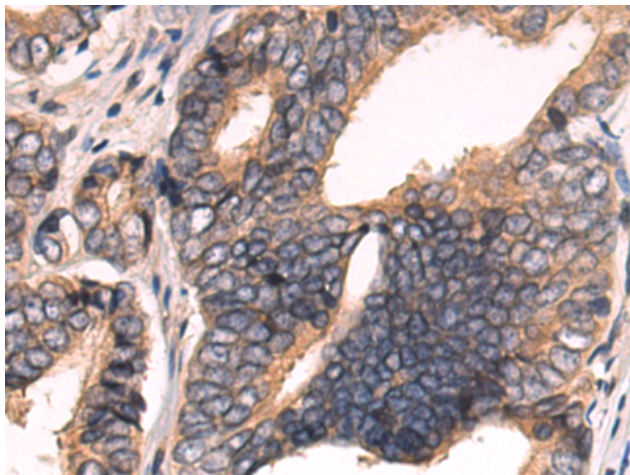
**Purification:** Antigen affinity purification

**Species Reactivity:** Human, Mouse

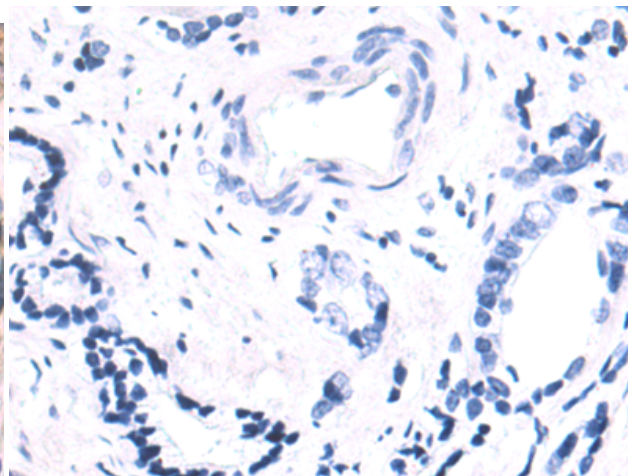
**Constituents:** PBS (without Mg<sup>2+</sup> and Ca<sup>2+</sup>), pH 7.4, 150 mM NaCl, 0.05% Sodium Azide and 40% glycerol

**Research Areas:** Cancer

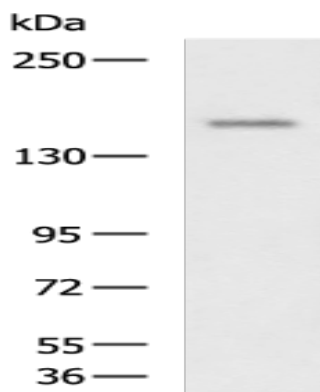
**Storage & Shipping:** Store at -20°C. Avoid repeated freezing and thawing



Immunohistochemistry analysis of paraffin embedded Human prostate cancer tissue using 218505 (CLASPI Antibody) at a dilution of 1/80 (Cytoplasm).



In comparison with the IHC on the left, the same paraffin-embedded Human prostate cancer tissue is first treated with the fusion protein and then with 218505 (Anti-CLASPI Antibody) at dilution 1/80.



Gel: 6% SDS-PAGE, Lysate: 40  $\mu$ g;  
Lane: Mouse fetal brain tissue lysate;  
Primary antibody: 218505 (CLASPI Antibody) at dilution 1/1300;  
Secondary antibody: HRP-conjugated Goat anti rabbit IgG at 1/5000 dilution;  
Exposure time: 10 seconds