

CLAUDIN 3 RABBIT MAB

Cat.#: N262043

Product Name: Anti-Claudin 3 Rabbit Monoclonal Antibody

Synonyms: RVPI; HRVPI; C7orf1; CPE-R2; CPETR2

UNIPROT ID: O15551

Background: Plays a major role in tight junction-specific obliteration of the intercellular space, through calcium-independent cell-adhesion activity.

Immunogen: A synthetic peptide of human Claudin 3

Applications: WB, ICC/IF, IP

Recommended Dilutions: WB: 1/500-1/1000 IF: 1/50-1/200 IP: 1/20

Host Species: Rabbit

Clonality: Rabbit Monoclonal

Clone ID: R08-4F8

MW: Calculated MW: 23 kDa; Observed MW: 20 kDa

Isotype: IgG

Purification: Affinity Purified

Species Reactivity: Human

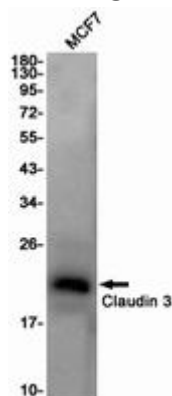
Conjugation: Unconjugated

Modification: Unmodified

Constituents: PBS (without Mg²⁺ and Ca²⁺), pH 7.3 containing 50% glycerol, 0.5% BSA and 0.02% sodium azide

Research Areas: Cell Biology

Storage & Shipping: Store at -20°C. Avoid repeated freezing and thawing



Western blot analysis of Claudin 3 in MCF-7 lysates using Claudin 3 antibody.



Product Description

Pioneering GTPase and Oncogene Product Development since 2010
