

CLAUDIN 5 RABBIT PAB

Cat.#: N225438

Product Name: Anti-Claudin 5 Rabbit pAb

Synonyms: CLDN5; AWAL; TMVCF; Claudin-5; Transmembrane protein deleted in VCFS; TMDVCF

UNIPROT ID: O00501

Background: Plays a major role in tight junction-specific obliteration of the intercellular space.

Immunogen: The antiserum was produced against synthesized peptide derived from human Claudin 5. AA range:169-218

Applications: WB,IHC-F,IHC-P,ICC/IF,ELISA

Recommended Dilutions: WB: 1/500-1/1000 IHC: 1/50-1/100 IF: 1/50-1/200
ELISA: 1/10000

Host Species: Rabbit

Clonality: Rabbit Polyclonal

Clone ID: -

MW: Calculated MW: 23 kDa; Observed MW: 23 kDa

Isotype: IgG

Purification: Affinity Purified

Species Reactivity: Human,Mouse

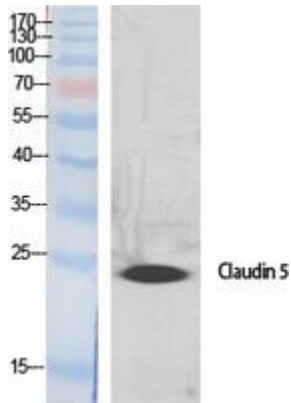
Conjugation: Unconjugated

Modification: Unmodified

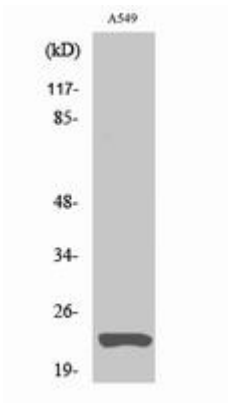
Constituents: PBS (without Mg²⁺ and Ca²⁺), pH 7.3 containing 50% glycerol, 0.5% BSA and 0.02% sodium azide

Research Areas: Cell Biology

Storage & Shipping: Store at -20°C. Avoid repeated freezing and thawing



Western blot analysis of Claudin 5 in HELA lysates using Claudin5 antibody.



Western blot analysis of Claudin 5 in A549 lysates using Claudin 5 antibody.