

CLCA4 RABBIT PAB

Cat.#: S216426

Product Name: Anti-CLCA4 Rabbit Polyclonal Antibody

Synonyms: CaCC; CaCC2

UNIPROT ID: Q14CN2 (Gene Accession - BC113689)

Background: The protein encoded by this gene belongs to the calcium sensitive chloride conductance protein family. To date, all members of this gene family map to the same site on chromosome 1p31-p22 and share high degrees of homology in size, sequence and predicted structure, but differ significantly in their tissue distributions. Alternative splicing results in multiple transcript variants, only one of which is thought to be protein coding. [provided by RefSeq, Dec 2008]

Immunogen: Fusion protein of human CLCA4

Applications: ELISA, IHC

Recommended Dilutions: IHC: 50-200; ELISA: 5000-10000

Host Species: Rabbit

Clonality: Rabbit Polyclonal

Isotype: Immunogen-specific rabbit IgG

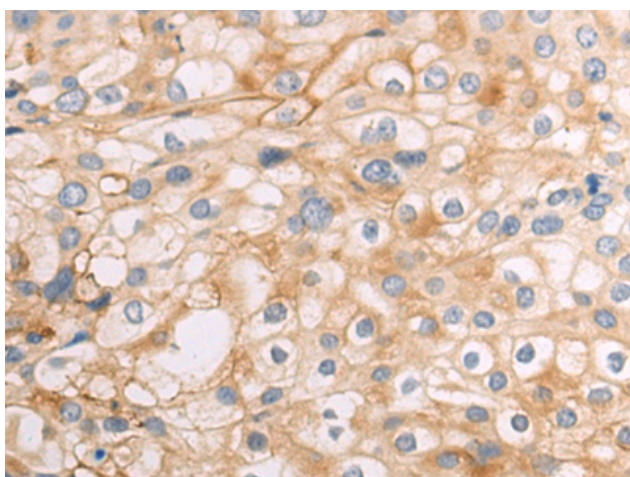
Purification: Antigen affinity purification

Species Reactivity: Human

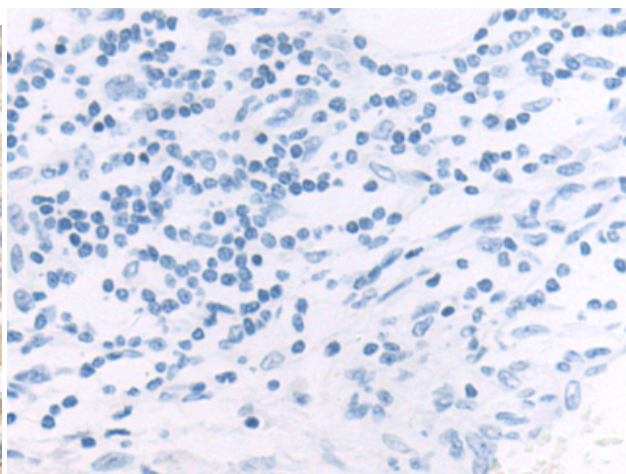
Constituents: PBS (without Mg²⁺ and Ca²⁺), pH 7.4, 150 mM NaCl, 0.05% Sodium Azide and 40% glycerol

Research Areas: Metabolism

Storage & Shipping: Store at -20°C. Avoid repeated freezing and thawing



Immunohistochemistry analysis of paraffin embedded Human cervical cancer tissue using 216426 (CLCA4 Antibody) at a dilution of 1/75 (Cytoplasm and Cell membrane).



In comparison with the IHC on the left, the same paraffin-embedded Human cervical cancer tissue is first treated with the fusion protein and then with 216426 (Anti-CLCA4 Antibody) at dilution 1/75.