

## CLCN5 RABBIT PAB

**Cat.#:** S218489

**Product Name:** Anti-CLCN5 Rabbit Polyclonal Antibody

**Synonyms:** XRN; CLC5; XLRH; CLCK2; CIC-5; DENTS; NPHL1; NPHL2; hCIC-K2

**UNIPROT ID:** P51795 (Gene Accession - BC130429)

**Background:** This gene encodes a member of the CIC family of chloride ion channels and ion transporters. The encoded protein is primarily localized to endosomal membranes and may function to facilitate albumin uptake by the renal proximal tubule. Mutations in this gene have been found in Dent disease and renal tubular disorders complicated by nephrolithiasis. Alternatively spliced transcript variants have been found for this gene.

**Immunogen:** Fusion protein of human CLCN5

**Applications:** ELISA, IHC

**Recommended Dilutions:** IHC: 25-100; ELISA: 5000-10000

**Host Species:** Rabbit

**Clonality:** Rabbit Polyclonal

**Isotype:** Immunogen-specific rabbit IgG

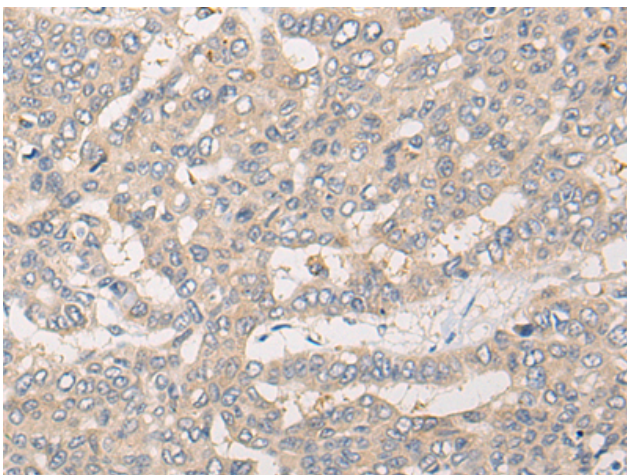
**Purification:** Antigen affinity purification

**Species Reactivity:** Human, Mouse, Rat

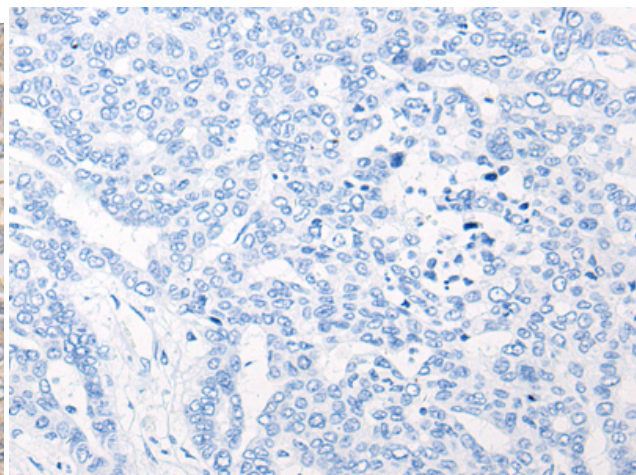
**Constituents:** PBS (without Mg<sup>2+</sup> and Ca<sup>2+</sup>), pH 7.4, 150 mM NaCl, 0.05% Sodium Azide and 40% glycerol

**Research Areas:** Metabolism, Neuroscience

**Storage & Shipping:** Store at -20°C. Avoid repeated freezing and thawing



Immunohistochemistry analysis of paraffin embedded Human liver cancer tissue using 218489 (CLCN5 Antibody) at a dilution of 1/20 (Cytoplasm).



In comparison with the IHC on the left, the same paraffin-embedded Human liver cancer tissue is first treated with the fusion protein and then with 218489 (Anti-CLCN5 Antibody) at dilution 1/20.