

## CLCNKA RABBIT PAB

**Cat.#:** S221746

**Product Name:** Anti-CLCNKA Rabbit Polyclonal Antibody

**Synonyms:** CLCK1; CIC-K1; hCIC-Ka

**UNIPROT ID:** P51800 (Gene Accession - NP\_004061)

**Background:** This gene is a member of the CLC family of voltage-gated chloride channels. The encoded protein is predicted to have 12 transmembrane domains, and requires a beta subunit called barttin to form a functional channel. It is thought to function in salt reabsorption in the kidney and potassium recycling in the inner ear. The gene is highly similar to CLCNKB, which is located 10 kb downstream from this gene. Multiple transcript variants encoding different isoforms have been found for this gene.

**Immunogen:** Synthetic peptide of human CLCNKA

**Applications:** ELISA, IHC

**Recommended Dilutions:** IHC: 20-100; ELISA: 2000-5000

**Host Species:** Rabbit

**Clonality:** Rabbit Polyclonal

**Isotype:** Immunogen-specific rabbit IgG

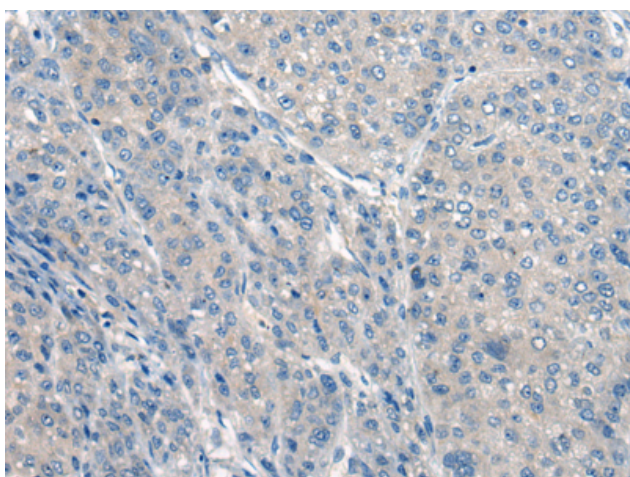
**Purification:** Antigen affinity purification

**Species Reactivity:** Human, Mouse

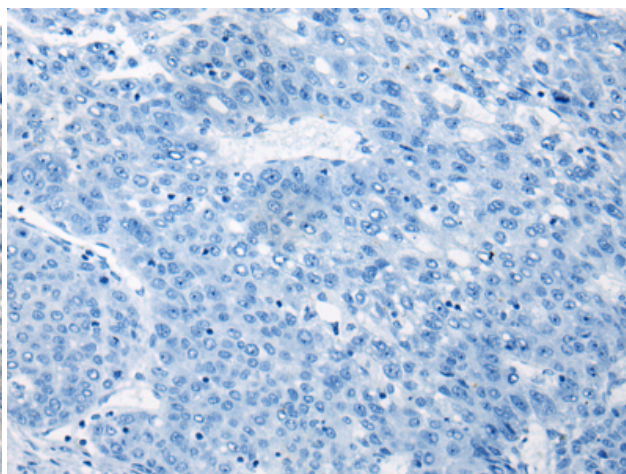
**Constituents:** PBS (without Mg<sup>2+</sup> and Ca<sup>2+</sup>), pH 7.4, 150 mM NaCl, 0.05% Sodium Azide and 40% glycerol

**Research Areas:** Metabolism, Neuroscience

**Storage & Shipping:** Store at -20°C. Avoid repeated freezing and thawing



Immunohistochemistry analysis of paraffin embedded Human liver cancer tissue using 221746 (CLCNKA Antibody) at a dilution of 1/20 (Cell membrane).



In comparison with the IHC on the left, the same paraffin-embedded Human liver cancer tissue is first treated with the synthetic peptide and then with 221746 (Anti-CLCNKA Antibody) at dilution 1/20.