

CLDN1 RABBIT PAB

Cat.#: S219808

Product Name: Anti-CLDN1 Rabbit Polyclonal Antibody

Synonyms: CLD1, SEMPI, ILVASC

UNIPROT ID: O95832 (Gene Accession - NP_066924)

Background: Tight junctions represent one mode of cell-to-cell adhesion in epithelial or endothelial cell sheets, forming continuous seals around cells and serving as a physical barrier to prevent solutes and water from passing freely through the paracellular space. These junctions are comprised of sets of continuous networking strands in the outwardly facing cytoplasmic leaflet, with complementary grooves in the inwardly facing extracytoplasmic leaflet. The protein encoded by this gene, a member of the claudin family, is an integral membrane protein and a component of tight junction strands. Loss of function mutations result in neonatal ichthyosis-sclerosing cholangitis syndrome.

Immunogen: Synthetic peptide of human CLDN1

Applications: ELISA, WB, IHC

Recommended Dilutions: IHC: 100-300;WB: 2000-5000;ELISA: 1000-10000

Host Species: Rabbit

Clonality: Rabbit Polyclonal

Isotype: Immunogen-specific rabbit IgG

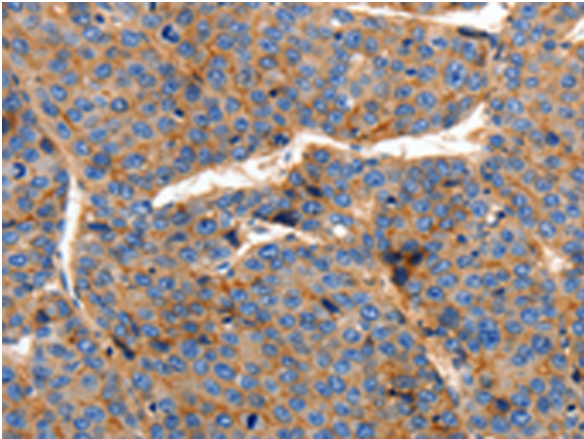
Purification: Antigen affinity purification

Species Reactivity: Human, Mouse, Rat

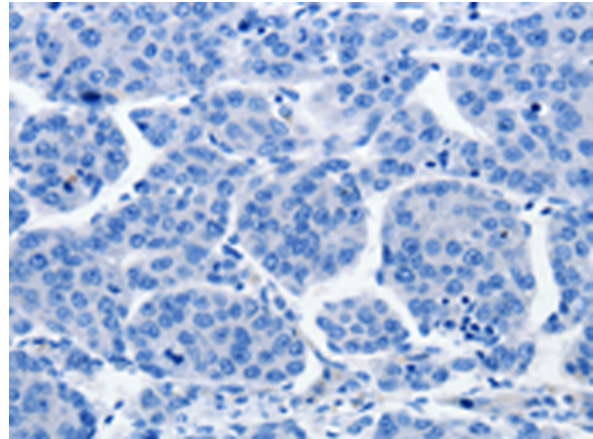
Constituents: PBS (without Mg²⁺ and Ca²⁺), pH 7.4, 150 mM NaCl, 0.05% Sodium Azide and 40% glycerol

Research Areas: Signal Transduction

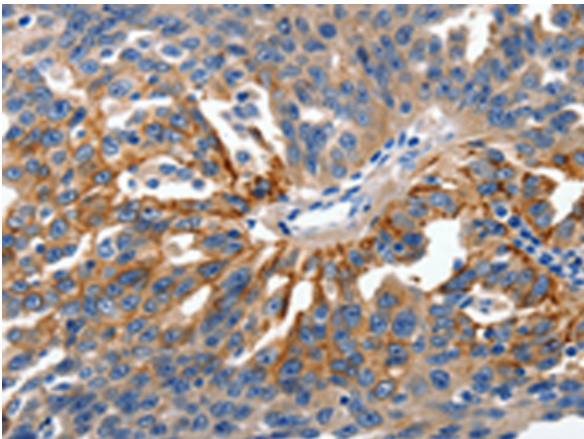
Storage & Shipping: Store at -20°C. Avoid repeated freezing and thawing



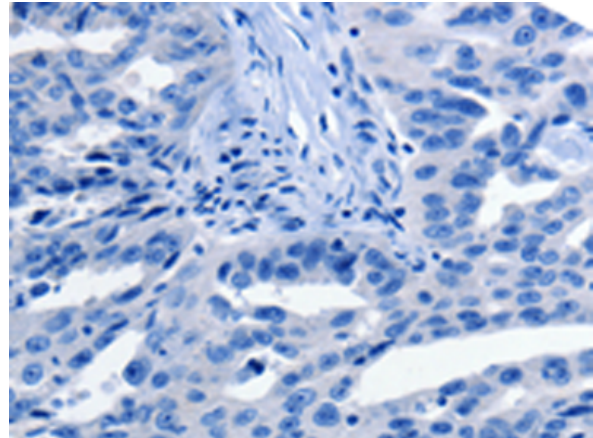
Immunohistochemistry analysis of paraffin embedded Human liver cancer tissue using 219808 (CLDN1 Antibody) at a dilution of 1/150 (Cytoplasm).



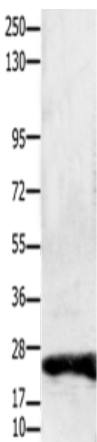
In comparison with the IHC on the left, the same paraffin-embedded Human liver cancer tissue is first treated with the synthetic peptide and then with 219808 (Anti-CLDN1 Antibody) at dilution 1/150.



The image on the left is immunohistochemistry of paraffin-embedded Human ovarian cancer tissue using 219808 (Anti-CLDN1 Antibody) at a dilution of 1/150.



In comparison with the IHC on the left, the same paraffin-embedded Human ovarian cancer tissue is first treated with synthetic peptide and then with D260403 (Anti-CLDN1 Antibody) at dilution 1/150.



Gel: 10% SDS-PAGE, Lysate: 30 µg;
Lane: Hela cells;
Primary antibody: 219808 (CLDN1 Antibody) at dilution 1/1900;
Secondary antibody: Goat anti rabbit IgG at 1/8000 dilution;
Exposure time: 20 seconds



Product Description

Pioneering GTPase and Oncogene Product Development since 2010
