

CLDN10 RABBIT PAB

Cat.#: S219812

Product Name: Anti-CLDN10 Rabbit Polyclonal Antibody

Synonyms: OSP-L, CPETRL3

UNIPROT ID: P78369 (Gene Accession - NP_008915)

Background: This gene encodes a member of the claudin family. Claudins are integral membrane proteins and components of tight junction strands. Tight junction strands serve as a physical barrier to prevent solutes and water from passing freely through the paracellular space between epithelial or endothelial cell sheets, and also play critical roles in maintaining cell polarity and signal transductions. The expression level of this gene is associated with recurrence of primary hepatocellular carcinoma. Six alternatively spliced transcript variants encoding different isoforms have been reported, but the transcript sequences of some variants are not determined.

Immunogen: Synthetic peptide of human CLDN10

Applications: ELISA, IHC

Recommended Dilutions: IHC: 50-150; ELISA: 1000-10000

Host Species: Rabbit

Clonality: Rabbit Polyclonal

Isotype: Immunogen-specific rabbit IgG

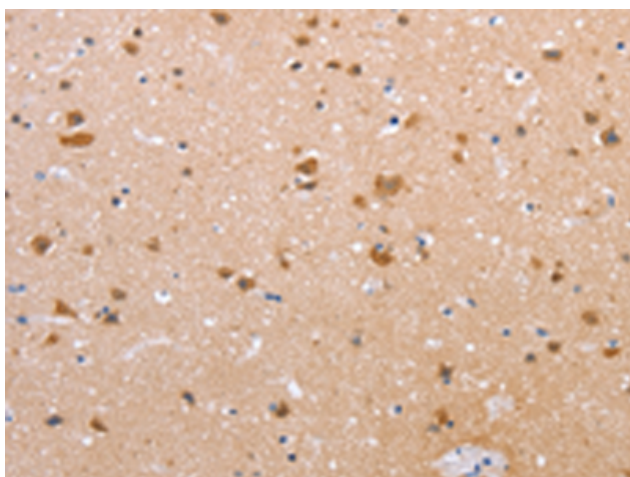
Purification: Antigen affinity purification

Species Reactivity: Human

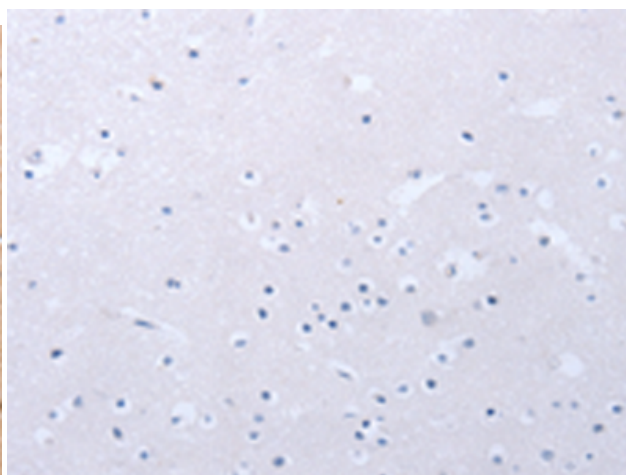
Constituents: PBS (without Mg²⁺ and Ca²⁺), pH 7.4, 150 mM NaCl, 0.05% Sodium Azide and 40% glycerol

Research Areas: Signal Transduction

Storage & Shipping: Store at -20°C. Avoid repeated freezing and thawing



Immunohistochemistry analysis of paraffin embedded Human brain tissue using 219812 (CLDN10 Antibody) at a dilution of 1/50 (Cytoplasm, Nucleus).



In comparison with the IHC on the left, the same paraffin-embedded Human brain tissue is first treated with the synthetic peptide and then with 219812 (Anti-CLDN10 Antibody) at dilution 1/50.