

CLDN5 RABBIT PAB

Cat.#: S219709

Product Name: Anti-CLDN5 Rabbit Polyclonal Antibody

Synonyms: AWAL, BEC1, TMVCF, CPETRL1

UNIPROT ID: O00501 (Gene Accession - NP_001124333)

Background: This gene encodes a member of the claudin family. Claudins are integral membrane proteins and components of tight junction strands. Tight junction strands serve as a physical barrier to prevent solutes and water from passing freely through the paracellular space between epithelial or endothelial cell sheets. Mutations in this gene have been found in patients with velocardiofacial syndrome. Alternatively spliced transcript variants encoding the same protein have been found for this gene

Immunogen: Synthetic peptide of human CLDN5

Applications: ELISA, IHC

Recommended Dilutions: IHC: Oct-50; ELISA: 1000-2000

Host Species: Rabbit

Clonality: Rabbit Polyclonal

Isotype: Immunogen-specific rabbit IgG

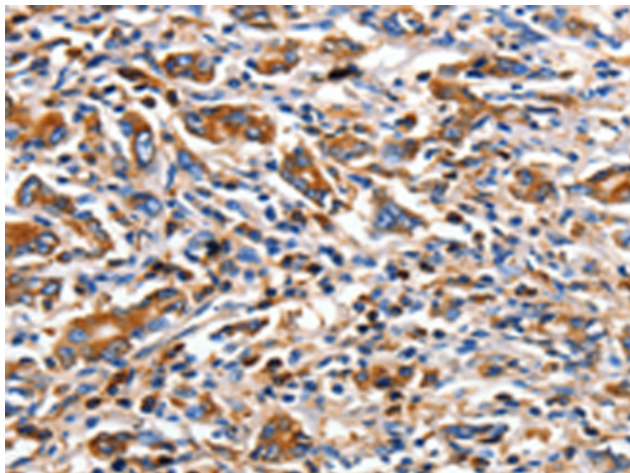
Purification: Antigen affinity purification

Species Reactivity: Human, Mouse, Rat

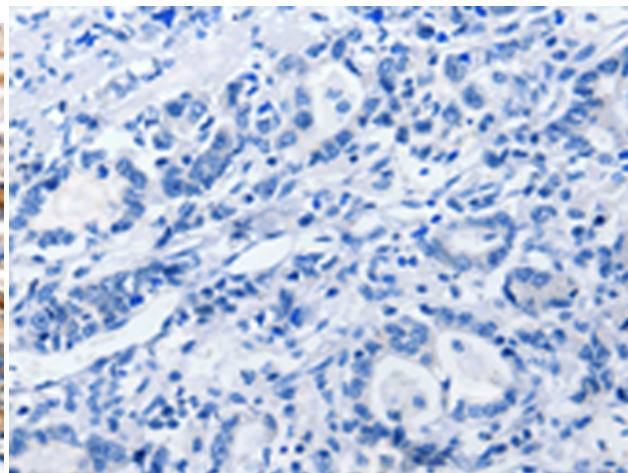
Constituents: PBS (without Mg²⁺ and Ca²⁺), pH 7.4, 150 mM NaCl, 0.05% Sodium Azide and 40% glycerol

Research Areas: Signal Transduction

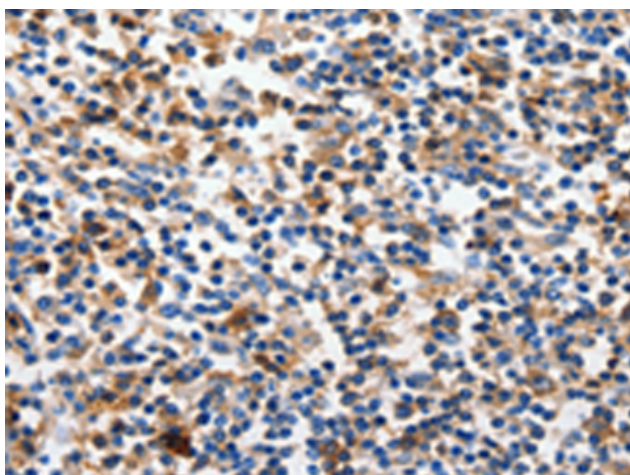
Storage & Shipping: Store at -20°C. Avoid repeated freezing and thawing



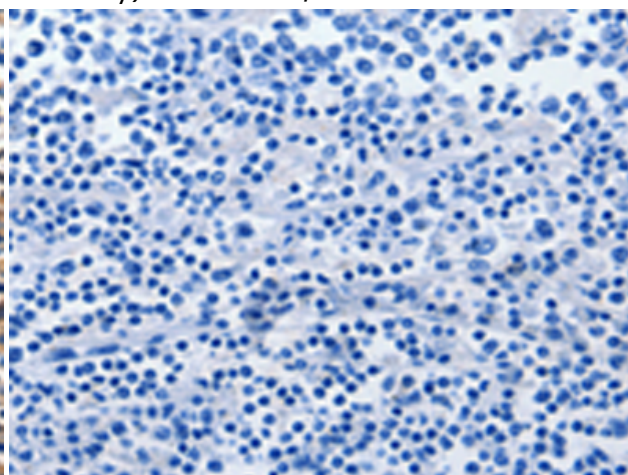
Immunohistochemistry analysis of paraffin embedded Human gastric cancer tissue using 219709 (Anti-CLDN5 Antibody) at a dilution of 1/10 (Cytoplasm).



In comparison with the IHC on the left, the same paraffin-embedded Human gastric cancer tissue is first treated with the synthetic peptide and then with 219709 (Anti-CLDN5 Antibody) at dilution 1/10.



The image on the left is immunohistochemistry of paraffin-embedded Human tonsil tissue using 219709 (Anti-CLDN5 Antibody) at a dilution of 1/10.



In comparison with the IHC on the left, the same paraffin-embedded Human tonsil tissue is first treated with synthetic peptide and then with D260192 (Anti-CLDN5 Antibody) at dilution 1/10.