

## CLDND1 RABBIT PAB

**Cat.#:** S216439

**Product Name:** Anti-CLDND1 Rabbit Polyclonal Antibody

**Synonyms:** Z38; C3orf4; GENX-3745

**UNIPROT ID:** Q9NY35 (Gene Accession - BC001757)

**Background:** Located in cell surface. [provided by Alliance of Genome Resources, Apr 2022]

**Immunogen:** Fusion protein of human CLDND1

**Applications:** ELISA, IHC

**Recommended Dilutions:** IHC: 50-200; ELISA: 5000-10000

**Host Species:** Rabbit

**Clonality:** Rabbit Polyclonal

**Isotype:** Immunogen-specific rabbit IgG

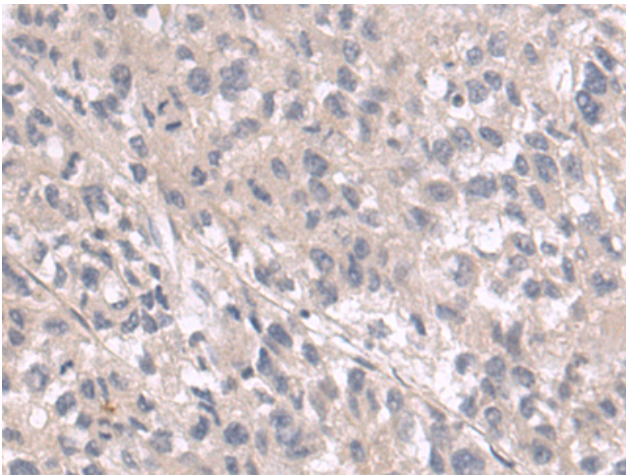
**Purification:** Antigen affinity purification

**Species Reactivity:** Human, Mouse

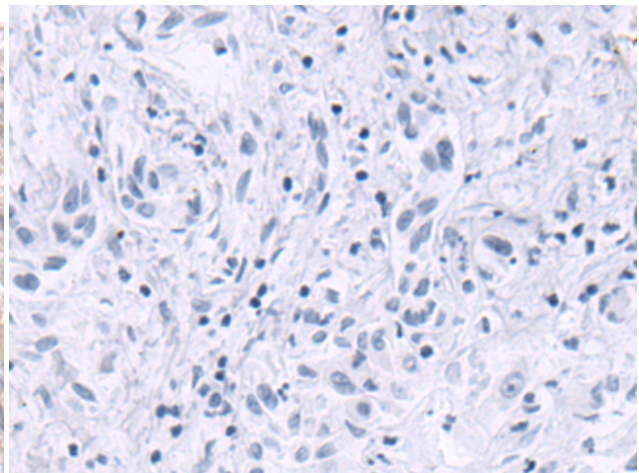
**Constituents:** PBS (without Mg<sup>2+</sup> and Ca<sup>2+</sup>), pH 7.4, 150 mM NaCl, 0.05% Sodium Azide and 40% glycerol

**Research Areas:** Cell Biology, Neuroscience

**Storage & Shipping:** Store at -20°C. Avoid repeated freezing and thawing



Immunohistochemistry analysis of paraffin embedded Human liver cancer tissue using 216439 (CLDND1 Antibody) at a dilution of 1/70 (Cytoplasm and Cell membrane).



In comparison with the IHC on the left, the same paraffin-embedded Human liver cancer tissue is first treated with the fusion protein and then with 216439 (Anti-CLDND1 Antibody) at dilution 1/70.