

CLEAVED-CASPASE 6 P18 RABBIT PAB

Cat.#: N225413

Product Name: Anti-Cleaved-Caspase 6 p18 Rabbit pAb

Synonyms: CASP6; MCH2; Caspase-6; CASP-6; Apoptotic protease Mch-2

UNIPROT ID: P55212

Background: Caspase-6 (Mch2) is one of the major executioner caspases functioning in cellular apoptotic processes. Upon apoptotic stimulation, initiator caspases such as caspase-9 are cleaved and activated. The activated upstream caspases further process downstream executioner caspases, such as caspase-3 and caspase-6, by cleaving them into large and small subunits, thereby initiating a caspase cascade leading to apoptosis. One of the major targets for caspase-6 is the membrane associated protein lamin A.

Immunogen: The antiserum was produced against synthesized peptide derived from human Caspase 6. AA range:130-179

Applications: WB,IHC-P,ELISA

Recommended Dilutions: WB: 1/500-1/1000 IHC: 1/50-1/100 ELISA: 1/10000

Host Species: Rabbit

Clonality: Rabbit Polyclonal

Clone ID: -

MW: Calculated MW: 33 kDa; Observed MW: 20,35 kDa

Isotype: IgG

Purification: Affinity Chromatography

Species Reactivity: Human,Rat

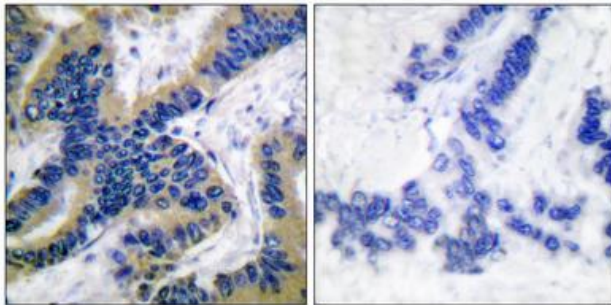
Conjugation: Unconjugated

Modification: Cleaved

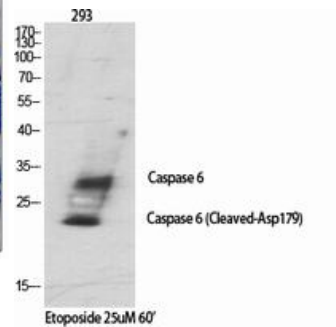
Constituents: PBS (without Mg²⁺ and Ca²⁺), pH 7.3 containing 50% glycerol, 0.5% BSA and 0.02% sodium azide

Research Areas: apoptosis - Caspase family

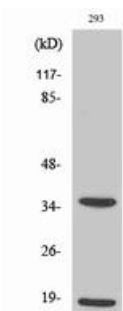
Storage & Shipping: Store at -20°C. Avoid repeated freezing and thawing



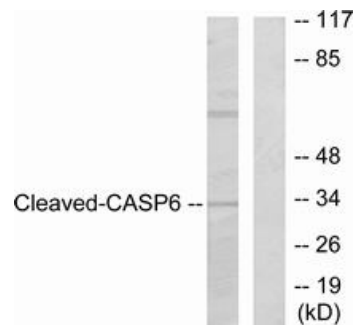
Immunohistochemistry analysis of paraffin-embedded Human lung carcinoma tissue using Caspase 6 (Cleaved-Asp16, 2) antibody. High-pressure and temperature Sodium Citrate pH 6.0 was used for antigen retrieval. Sample with blocking peptide on the right.



Western blot analysis of Cleaved-Caspase 6 p18 in various lysates using Cleaved-Caspase 6 p18 antibody.



Western blot analysis of Cleaved-Caspase 6 p18 in 293 lysates using Cleaved-Caspase 6 p18 (D179) antibody.



Western blot analysis of Cleaved-Caspase 6 p18 in 293 lysates treated with Etoposide using Cleaved-Caspase 6 p18 antibody. The lane on the right is blocked with the synthesized peptide.