

## CLEAVED-NOTCH1 RABBIT PAB

**Cat.#:** N225351

**Product Name:** Anti-Cleaved-Notch1 Rabbit pAb

**Synonyms:** NOTCH1; TANI; Neurogenic locus notch homolog protein 1; Notch 1; hNI; Translocation-associated notch protein TAN-1

**UNIPROT ID:** P46531

**Background:** Functions as a receptor for membrane-bound ligands Jagged1, Jagged2 and Delta1 to regulate cell-fate determination. Upon ligand activation through the released notch intracellular domain (NICD) it forms a transcriptional activator complex with RBPJ/RBPSUH and activates genes of the enhancer of split locus. Affects the implementation of differentiation, proliferation and apoptotic programs. Involved in angiogenesis; negatively regulates endothelial cell proliferation and migration and angiogenic sprouting.

**Immunogen:** The antiserum was produced against synthesized peptide derived from human Notch 1. AA range:1735-1784

**Applications:** WB,ICC/IF,IHC-F,IHC-P,ELISA

**Recommended Dilutions:** WB: 1/500-1/1000 IHC: 1/50-1/100 IF: 1/50-1/200  
ELISA: 1/10000

**Host Species:** Rabbit

**Clonality:** Rabbit Polyclonal

**Clone ID:** -

**MW:** Calculated MW: 273 kDa; Observed MW: 110 kDa

**Isotype:** IgG

**Purification:** Affinity Purified

**Species Reactivity:** Human,Mouse,Rat

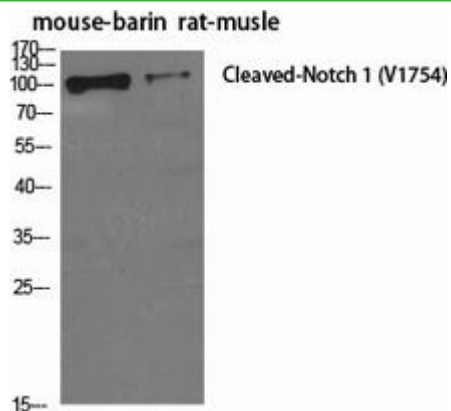
**Conjugation:** Unconjugated

**Modification:** Cleaved

**Constituents:** PBS (without Mg<sup>2+</sup> and Ca<sup>2+</sup>), pH 7.3 containing 50% glycerol, 0.5% BSA and 0.02% sodium azide

**Research Areas:** Neuroscience

**Storage & Shipping:** Store at -20°C. Avoid repeated freezing and thawing



Western blot analysis of Cleaved-Notch1 in various lysates using Cleaved-Notch1 antibody.