

CLEC14A RABBIT PAB

Cat.#: S214964

Product Name: Anti-CLEC14A Rabbit Polyclonal Antibody

Synonyms: CEG1; EGFR-5; C14orf27

UNIPROT ID: Q86T13 (Gene Accession - NP_778230)

Background: This gene encodes a member of the C-type lectin/C-type lectin-like domain (CTL/CTLD) superfamily. Members of this family share a common protein fold and have diverse functions, such as cell adhesion, cell-cell signalling, glycoprotein turnover, and roles in inflammation and immune response. This family member plays a role in cell-cell adhesion and angiogenesis. It functions in filopodia formation, cell migration and tube formation. Due to its presence at higher levels in tumor endothelium than in normal tissue endothelium, it is considered to be a candidate for tumor vascular targeting.

Immunogen: Synthetic peptide of human CLEC14A

Applications: ELISA, IHC

Recommended Dilutions: IHC: 50-100; ELISA: 5000-10000

Host Species: Rabbit

Clonality: Rabbit Polyclonal

Isotype: Immunogen-specific rabbit IgG

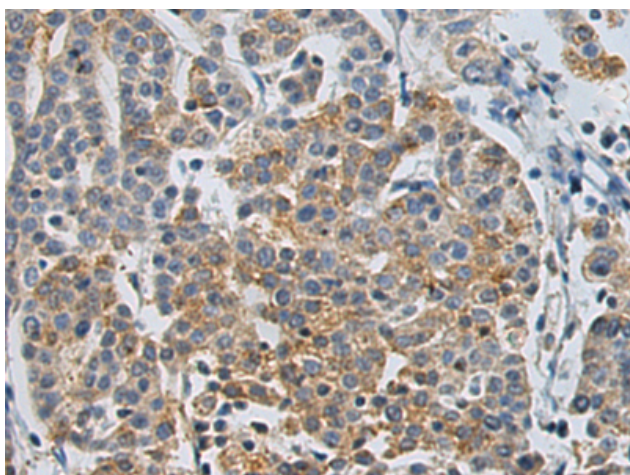
Purification: Antigen affinity purification

Species Reactivity: Human

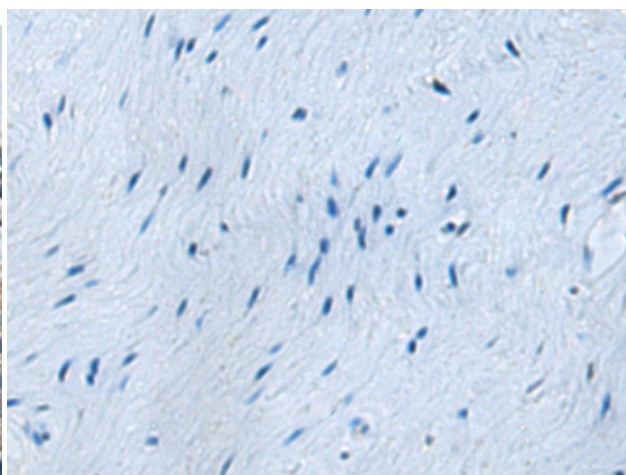
Constituents: PBS (without Mg²⁺ and Ca²⁺), pH 7.4, 150 mM NaCl, 0.05% Sodium Azide and 40% glycerol

Research Areas: Cell Biology

Storage & Shipping: Store at -20°C. Avoid repeated freezing and thawing



Immunohistochemistry analysis of paraffin embedded Human cervical cancer tissue using 214964(CLEC14A Antibody) at a dilution of 1/50(Cytoplasm).



In comparison with the IHC on the left, the same paraffin-embedded Human cervical cancer tissue is first treated with the synthetic peptide and then with 214964(Anti-CLEC14A Antibody) at dilution 1/50.