

CLEC16A RABBIT PAB

Cat.#: S220750

Product Name: Anti-CLEC16A Rabbit Polyclonal Antibody

Synonyms: Gop-1; KIAA0350

UNIPROT ID: Q2KHT3 (Gene Accession - NP_056041)

Background: This gene encodes a member of the C-type lectin domain containing family. Single nucleotide polymorphisms in introns of this gene have been associated with diabetes mellitus, multiple sclerosis and rheumatoid arthritis. Multiple transcript variants encoding different isoforms have been found for this gene.

Immunogen: Synthetic peptide of human CLEC16A

Applications: ELISA, IHC

Recommended Dilutions: IHC: 50-200; ELISA: 2000-5000

Host Species: Rabbit

Clonality: Rabbit Polyclonal

Isotype: Immunogen-specific rabbit IgG

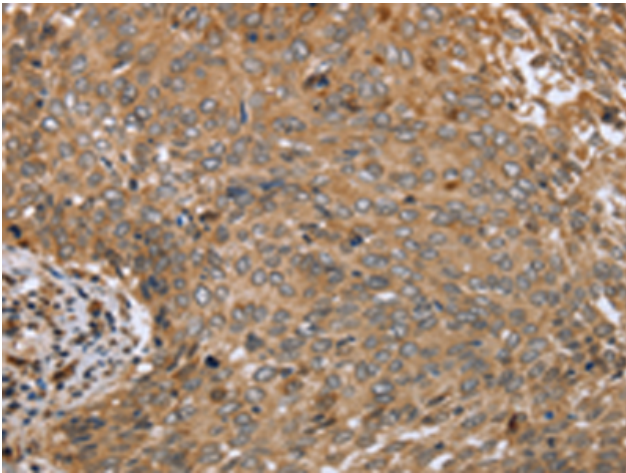
Purification: Antigen affinity purification

Species Reactivity: Human

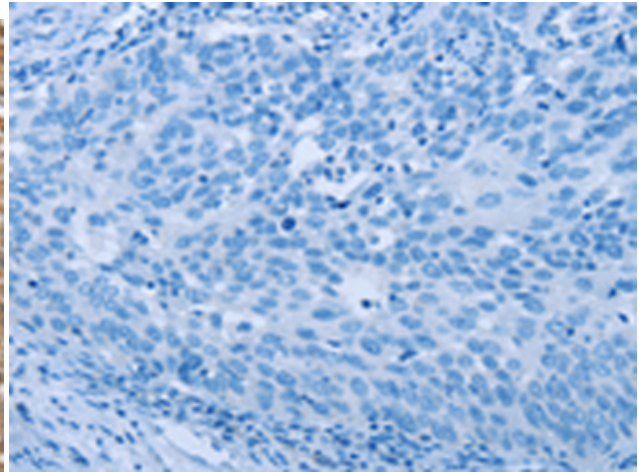
Constituents: PBS (without Mg²⁺ and Ca²⁺), pH 7.4, 150 mM NaCl, 0.05% Sodium Azide and 40% glycerol

Research Areas: Immunology

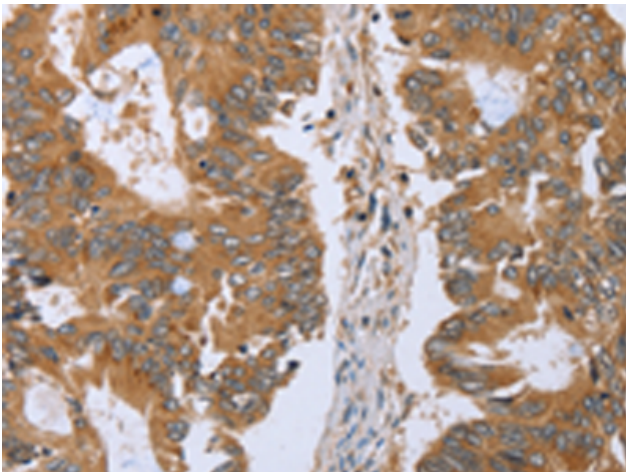
Storage & Shipping: Store at -20°C. Avoid repeated freezing and thawing



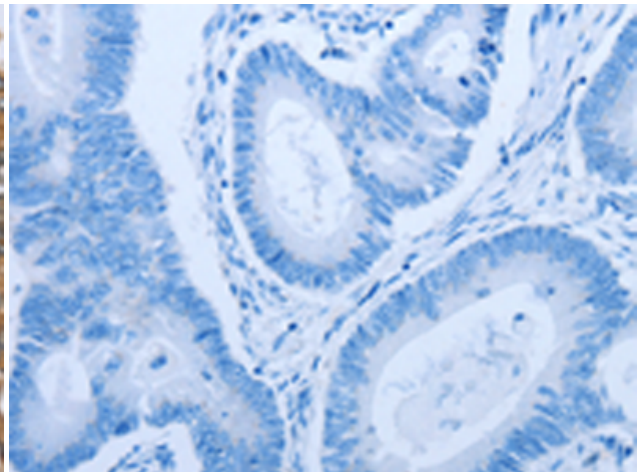
Immunohistochemistry analysis of paraffin embedded Human cervical cancer tissue using 220750 (CLEC16A Antibody) at a dilution of 1/45 (Cytoplasm).



In comparison with the IHC on the left, the same paraffin-embedded Human cervical cancer tissue is first treated with the synthetic peptide and then with 220750 (Anti-CLEC16A Antibody) at dilution 1/45.



The image on the left is immunohistochemistry of paraffin-embedded Human colon cancer tissue using 220750 (Anti-CLEC16A Antibody) at a dilution of 1/45.



In comparison with the IHC on the left, the same paraffin-embedded Human colon cancer tissue is first treated with synthetic peptide and then with D261959 (Anti-CLEC16A Antibody) at dilution 1/45.