

## CLEC2A RABBIT PAB

**Cat.#:** S219705

**Product Name:** Anti-CLEC2A Rabbit Polyclonal Antibody

**Synonyms:** KACL; PILAR; UNQ5792; INPE5792

**UNIPROT ID:** Q6UVW9 (Gene Accession - NP\_001124183.1)

**Background:** CLEC2A belongs to the CLEC2 family of activation-induced, natural killer gene complex-encoded C-type lectin-like receptors (Spree et al., 2007 [PubMed 18046548]). [supplied by OMIM, May 2008]

**Immunogen:** Synthetic peptide of human CLEC2A

**Applications:** ELISA, IHC

**Recommended Dilutions:** IHC: 50-100; ELISA: 5000-10000

**Host Species:** Rabbit

**Clonality:** Rabbit Polyclonal

**Isotype:** Immunogen-specific rabbit IgG

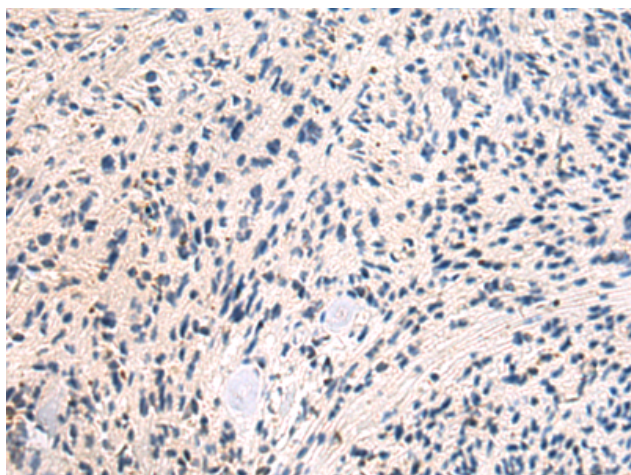
**Purification:** Antigen affinity purification

**Species Reactivity:** Human

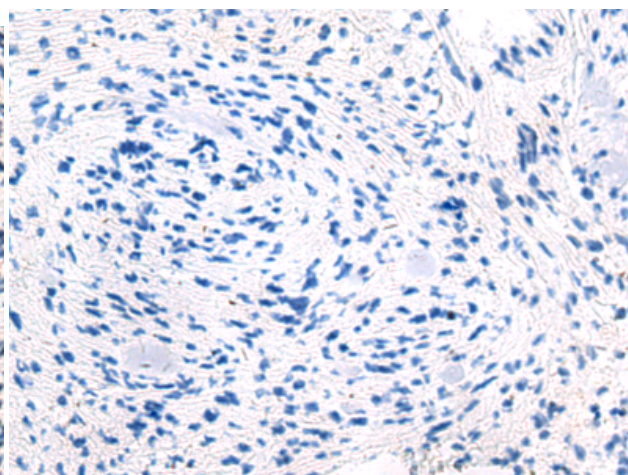
**Constituents:** PBS (without Mg<sup>2+</sup> and Ca<sup>2+</sup>), pH 7.4, 150 mM NaCl, 0.05% Sodium Azide and 40% glycerol

**Research Areas:** Immunology

**Storage & Shipping:** Store at -20°C. Avoid repeated freezing and thawing



Immunohistochemistry analysis of paraffin embedded Human brain tissue using 219705 (CLEC2A Antibody) at a dilution of 1/55 (Cytoplasm).



In comparison with the IHC on the left, the same paraffin-embedded Human brain tissue is first treated with the synthetic peptide and then with 219705 (Anti-CLEC2A Antibody) at dilution 1/55.