

## CLEC3B RABBIT PAB

**Cat.#:** S218831

**Product Name:** Anti-CLEC3B Rabbit Polyclonal Antibody

**Synonyms:** TN; TNA

**UNIPROT ID:** P05452 (Gene Accession - BC011024 )

**Background:** Tetranectin binds to plasminogen and to isolated kringle 4. May be involved in the packaging of molecules destined for exocytosis.

**Immunogen:** Fusion protein of human CLEC3B

**Applications:** ELISA, WB, IHC

**Recommended Dilutions:** IHC: 40-200;WB: 500-2000;ELISA: 5000-10000

**Host Species:** Rabbit

**Clonality:** Rabbit Polyclonal

**Isotype:** Immunogen-specific rabbit IgG

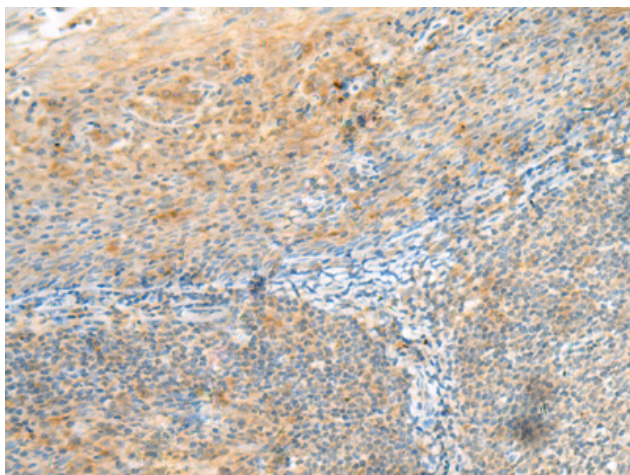
**Purification:** Antigen affinity purification

**Species Reactivity:** Human, Mouse, Rat

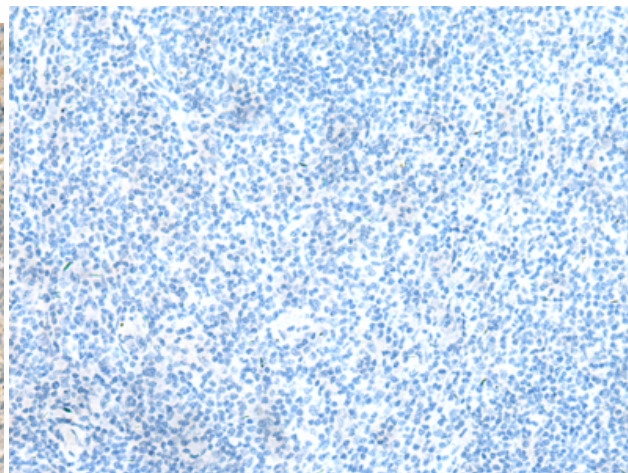
**Constituents:** PBS (without Mg<sup>2+</sup> and Ca<sup>2+</sup>), pH 7.4, 150 mM NaCl, 0.05% Sodium Azide and 40% glycerol

**Research Areas:** Signal Transduction, Cardiovascular

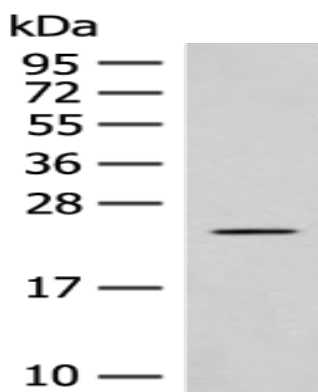
**Storage & Shipping:** Store at -20°C. Avoid repeated freezing and thawing



Immunohistochemistry analysis of paraffin embedded Human tonsil tissue using 218831(CLEC3B Antibody) at a dilution of 1/90(Cytoplasm).



In comparison with the IHC on the left, the same paraffin-embedded Human tonsil tissue is first treated with the fusion protein and then with 218831(Anti-CLEC3B Antibody) at dilution 1/90.



Gel: 12%SDS-PAGE, Lysate: 40  $\mu$ g;  
Lane: Rat heart tissue lysate;  
Primary antibody: 218831(CLEC3B Antibody) at dilution 1/650;  
Secondary antibody: Goat anti rabbit IgG at 1/8000 dilution;  
Exposure time: 30 seconds